



中国认可
国际互认
检测
TESTING
CNAS L6478



TEST REPORT

Reference No. : WTF18F08121598A1C
Applicant : Mid Ocean Brands B.V
Address : 7/F., Kings Tower, 111 King Lam Street, Cheung Sha Wan, Kowloon, Hong Kong
Manufacturer : 114276
Sample Name : Small COB light
Model No. : MO8996
Test Requested : In accordance with the RoHS Directive 2011/65/EU
Test Method : 1) With Reference to IEC 62321-2:2013, disassembly, disjointment and mechanical sample preparation
 2) With Reference to IEC 62321-3-1:2013, screening - Lead, mercury, cadmium, total chromium and total bromine by X-ray fluorescence spectrometry
 3) With reference to IEC 62321-4:2013, determination of Mercury by ICP-OES
 4) With reference to IEC 62321-5:2013, determination of Lead and Cadmium by ICP-OES
 5) With reference to IEC 62321-7-2:2017 and IEC 62321-7-1:2015, determination of Hexavalent Chromium by UV-Vis
 6) With reference to IEC 62321-6:2015, determination of PBBs and PBDEs by GC-MS
Test Conclusion..... : Based on the performed tests on the submitted samples, the results comply with the RoHS Directive 2011/65/EU
Date of Receipt sample : 2018-08-20 & 2018-08-30
Date of Test..... : 2018-08-20 to 2018-09-01
Date of Issue : 2018-09-01
Test Result : Please refer to next page (s)

Remarks:

The results shown in this test report refer only to the sample(s) tested, this test report cannot be reproduced, except in full, without prior written permission of the company. The report would be invalid without specific stamp of test institute and the signatures of compiler and approver.

Prepared By:

Waltek Services (Foshan) Co., Ltd.

Address: No. 13-19, 2/F, 2nd Building, Sunlink International Machinery City, Chencun Town, Shunde District, Foshan, Guangdong, China

Tel :+86-757-23811398

Fax:+86-757-23811381

Compiled by:

Jessise Liu

Jessise.Liu / Project Engineer

Approved by:

Ding Zhang

Ding Zhang / Lab Manager



**Test Results:**

Part No.	Part Description	Result of XRF		Result of Wet Chemical Testing (mg/kg)	Conclusion on RoHS
1	Silvery metal rivet	Cd	BL	NA	Comply
		Pb	BL		
		Hg	BL		
		Cr	BL		
		Br	BL		
2	Silvery metal buckle	Cd	BL	NA	Comply
		Pb	BL		
		Hg	BL		
		Cr	BL		
		Br	BL		
3	Silvery metal sheet	Cd	BL	NA	Comply
		Pb	BL		
		Hg	BL		
		Cr	BL		
		Br	BL		
4	Silvery metal spring	Cd	BL	NA	Comply
		Pb	BL		
		Hg	BL		
		Cr	BL		
		Br	BL		
5	Silvery metal ring with red coating	Cd	BL	NA	Comply
		Pb	BL		
		Hg	BL		
		Cr	BL		
		Br	BL		
6	Red plastic frame	Cd	BL	NA	Comply
		Pb	BL		
		Hg	BL		
		Cr	BL		
		Br	BL		
7	Black plastic sheet	Cd	BL	NA	Comply
		Pb	BL		
		Hg	BL		
		Cr	BL		
		Br	BL		
8	Red rubber cap of switch	Cd	BL	NA	Comply
		Pb	BL		
		Hg	BL		
		Cr	BL		
		Br	BL		



Part No.	Part Description	Result of XRF		Result of Wet Chemical Testing (mg/kg)	Conclusion on RoHS
9	Transparent plastic cover	Cd	BL	NA	Comply
		Pb	BL		
		Hg	BL		
		Cr	BL		
		Br	BL		
10	Black plastic frame	Cd	BL	NA	Comply
		Pb	BL		
		Hg	BL		
		Cr	BL		
		Br	BL		
11	Black plastic shell	Cd	BL	NA	Comply
		Pb	BL		
		Hg	BL		
		Cr	BL		
		Br	BL		
12	Silvery magnetic sheet	Cd	BL	NA	Comply
		Pb	BL		
		Hg	BL		
		Cr	BL		
		Br	BL		
13	Silvery metal sheet	Cd	BL	NA	Comply
		Pb	BL		
		Hg	BL		
		Cr	BL		
		Br	BL		
14	Red plastic wire covering	Cd	BL	NA	Comply
		Pb	BL		
		Hg	BL		
		Cr	BL		
		Br	BL		
15	Coppery metal wire	Cd	BL	NA	Comply
		Pb	BL		
		Hg	BL		
		Cr	BL		
		Br	BL		
16	Solder	Cd	BL	NA	Comply
		Pb	BL		
		Hg	BL		
		Cr	BL		
		Br	BL		



Part No.	Part Description	Result of XRF		Result of Wet Chemical Testing (mg/kg)	Conclusion on RoHS
17	Chip LED	Cd	BL	NA	Comply
		Pb	BL		
		Hg	BL		
		Cr	BL		
		Br	BL		
18	Silvery metal sheet with white coating	Cd	BL	NA	Comply
		Pb	BL		
		Hg	BL		
		Cr	BL		
		Br	BL		
19	Chip IC	Cd	BL	PBBs :ND PBDEs :ND	Comply
		Pb	BL		
		Hg	BL		
		Cr	BL		
		Br	IN		
20	Solder	Cd	BL	NA	Comply
		Pb	BL		
		Hg	BL		
		Cr	BL		
		Br	BL		
21	Yellow PCB with green coating	Cd	BL	PBBs :ND PBDEs :ND	Comply
		Pb	BL		
		Hg	BL		
		Cr	BL		
		Br	IN		
22	Silvery metal shell of switch	Cd	BL	NA	Comply
		Pb	BL		
		Hg	BL		
		Cr	BL		
		Br	BL		
23	Black plastic button of switch	Cd	BL	PBBs :ND PBDEs :ND	Comply
		Pb	BL		
		Hg	BL		
		Cr	BL		
		Br	IN		
24	White plastic base of switch	Cd	BL	NA	Comply
		Pb	BL		
		Hg	BL		
		Cr	BL		
		Br	BL		



Part No.	Part Description	Result of XRF		Result of Wet Chemical Testing (mg/kg)	Conclusion on RoHS
		Cd	BL		
25	Silvery metal sheet of switch	Pb	BL	NA	Comply
		Hg	BL		
		Cr	BL		
		Br	BL		
		Cd	BL		
26	Silvery metal pin of switch	Pb	BL	NA	Comply
		Hg	BL		
		Cr	BL		
		Br	BL		
		Cd	BL		
27	Chip capacitor	Pb	BL	NA	Comply
		Hg	BL		
		Cr	BL		
		Br	BL		
		Cd	BL		
28	Solder	Pb	BL	NA	Comply
		Hg	BL		
		Cr	BL		
		Br	BL		
		Cd	BL		

WALTEK

**Remark:**

- (1) Results are obtained by EDXRF for primary screening, and further chemical testing by ICP (for Cd, Pb, Hg), UV-VIS (for Cr⁶⁺) and GC-MS (for PBBs, PBDEs) is recommended to be performed, if the concentration exceeds the below warning value according to IEC 62321-3-1: 2013 (unit: mg/kg)

Element	Polymer	Metal	Composite Materials
Cd	$BL \leq (70-3\sigma) < IN < (130+3\sigma) \leq OL$	$BL \leq (70-3\sigma) < IN < (130+3\sigma) \leq OL$	$LOD < IN < (150+3\sigma) \leq OL$
Pb	$BL \leq (700-3\sigma) < IN < (1300+3\sigma) \leq OL$	$BL \leq (700-3\sigma) < IN < (1300+3\sigma) \leq OL$	$BL \leq (500-3\sigma) < IN < (1500+3\sigma) \leq OL$
Hg	$BL \leq (700-3\sigma) < IN < (1300+3\sigma) \leq OL$	$BL \leq (700-3\sigma) < IN < (1300+3\sigma) \leq OL$	$BL \leq (500-3\sigma) < IN < (1500+3\sigma) \leq OL$
Cr	$BL \leq (700-3\sigma) < IN$	$BL \leq (700-3\sigma) < IN$	$BL \leq (500-3\sigma) < IN$
Br	$BL \leq (300-3\sigma) < IN$	--	$BL \leq (250-3\sigma) < IN$

BL= Below Limit OL= Over Limit LOD = Limit of Detection -- = Not Regulated

- (2) "IN" expresses the inconclusive region, and further chemical testing to confirm whether it complies with the requirement of RoHS Directive.
- (3) The XRF screening test for RoHS elements – the reading may be different to the actual content in the sample be of non-uniformity composition.
- (4) ppm = mg / kg, based on the dry weight of tested sample.
- (5) ND = Not Detected, less than the value of Method Detection Limit.
- (6) NA = Not Applicable, as the XRF screening test result was below the limit, it was not need to conduct the wet chemical testing.
- (7) MDL= Method Detection Limit in wet chemical test.

Test Items	Pb	Cd	Hg	Cr ⁶⁺	PBB	PBDE
Units	mg/kg	mg/kg	mg/kg	mg/kg	µg/cm ²	mg/kg
MDL	2	2	2	2	0.1	5

The MDL for single compound of PBBs and PBDEs is 5mg/kg, MDL of Cr⁶⁺ for polymer and composite sample is 2mg/kg and MDL of Cr⁶⁺ for metal sample is 0.1µg/cm².

- (8) According to IEC 62321-7-1:2015, determined of Cr⁶⁺ on metal sample by boiling water extraction test method, and result is shown as Positive/Negative.

Boiling water extraction:

Negative = Absence of Cr⁶⁺ coating, the detected concentration in boiling water extraction solution is less than 0.10ug/cm².

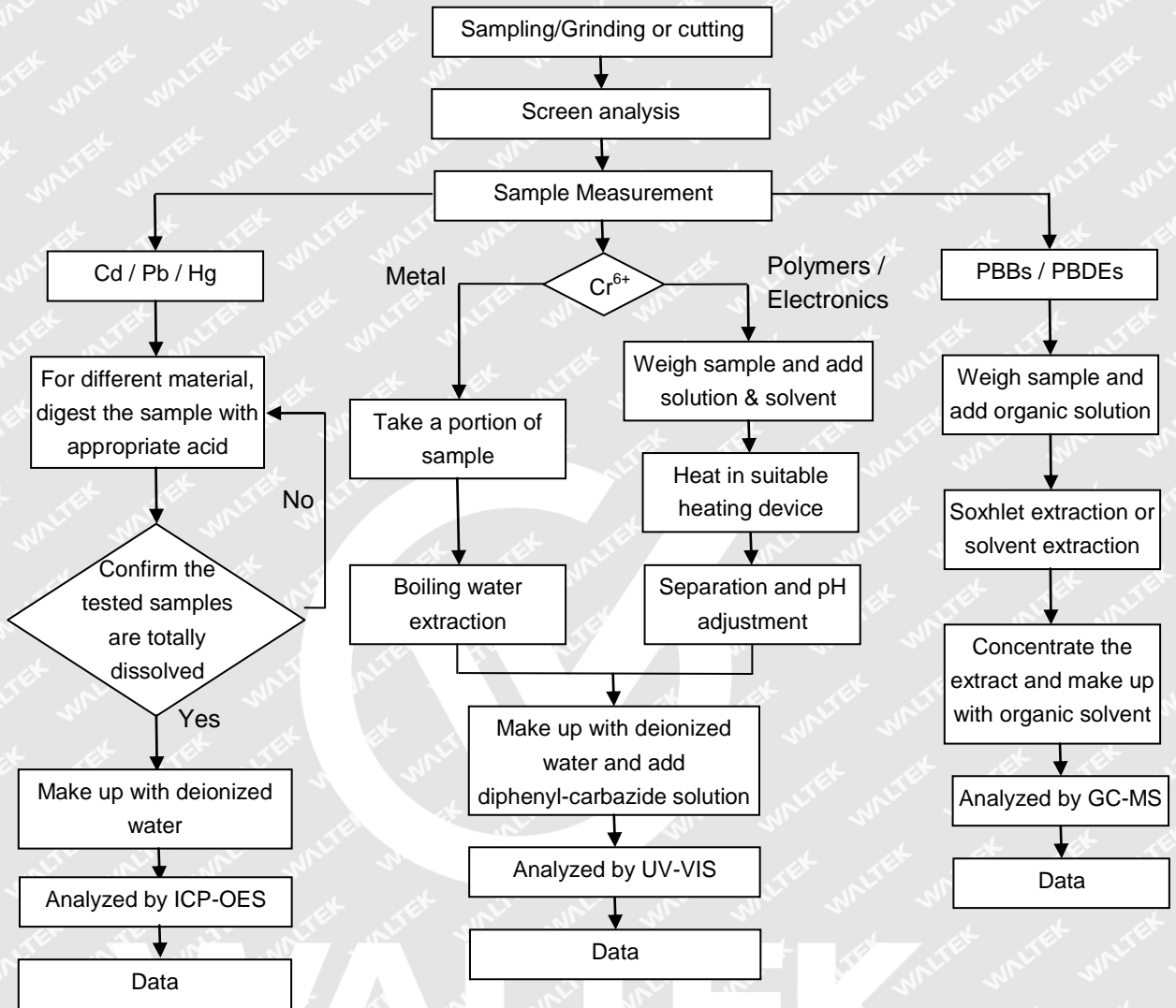
Positive = Presence of Cr⁶⁺ coating, the detected concentration in boiling water extraction solution is greater than 0.13ug/cm².

Information on storage conditions and production date of the tested sample is unavailable and thus Cr⁶⁺ results represent status of the sample at the time of testing.

- (9) The testing standard "IEC 62321-7-2:2017" does not been accredited by CNAS.

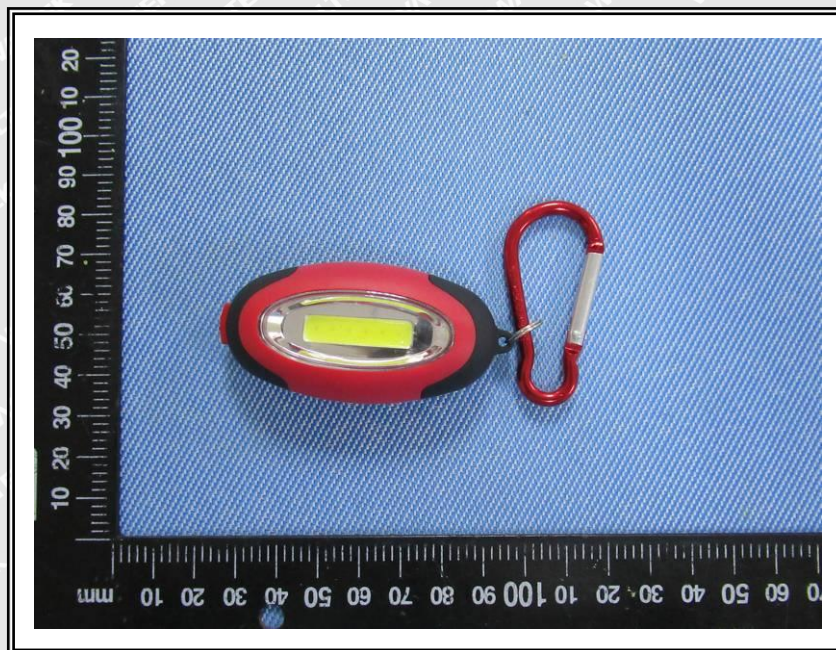


Measurement Flowchart:





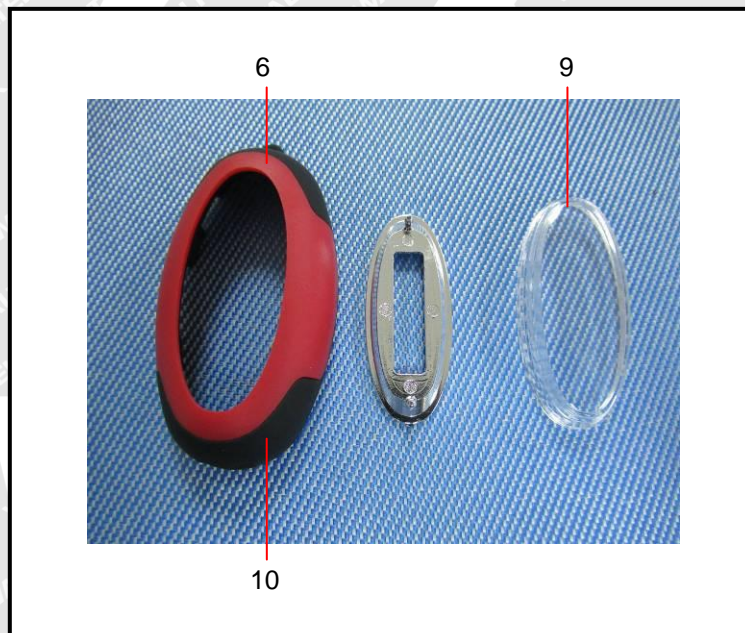
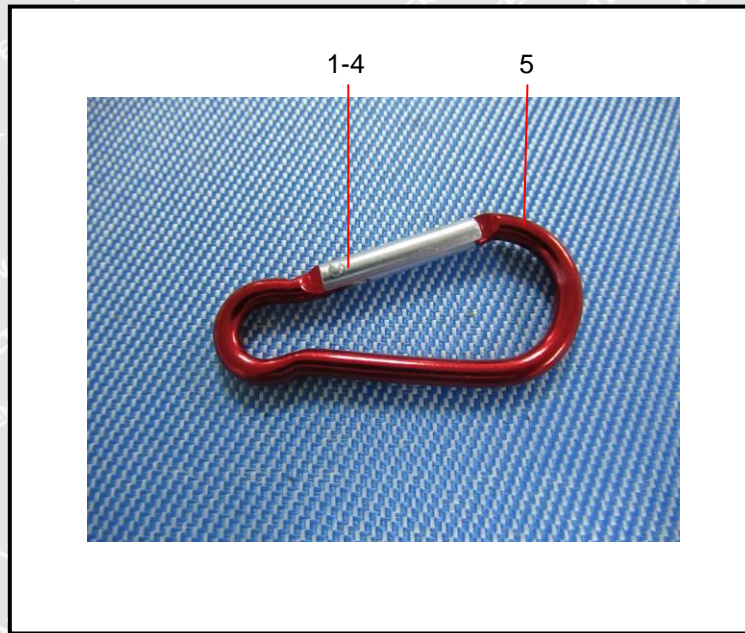
Sample Photo:

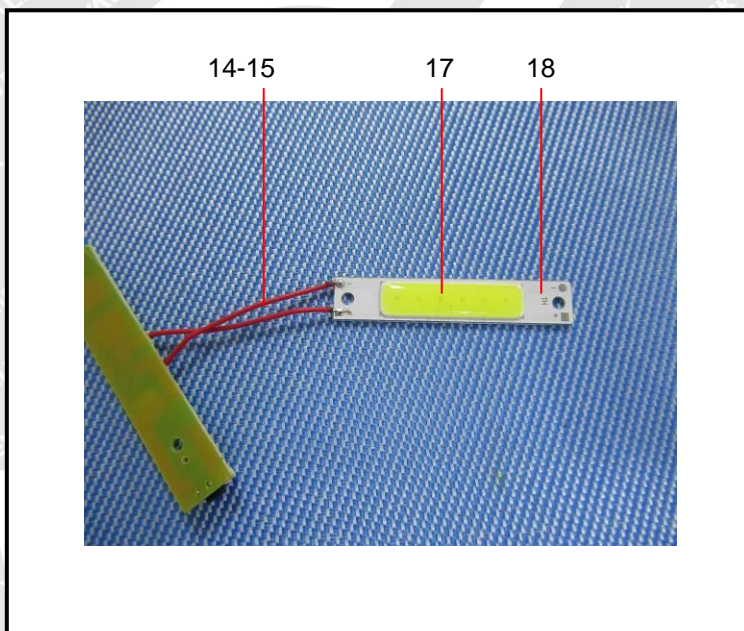
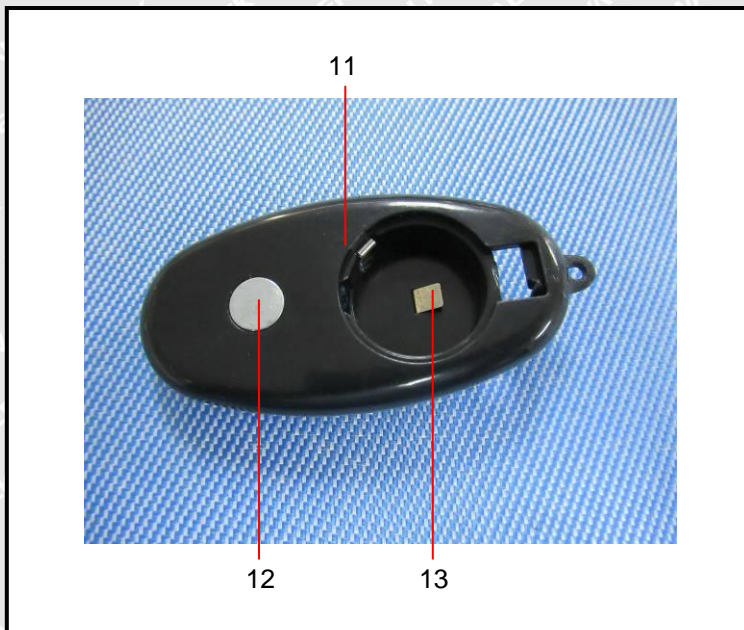


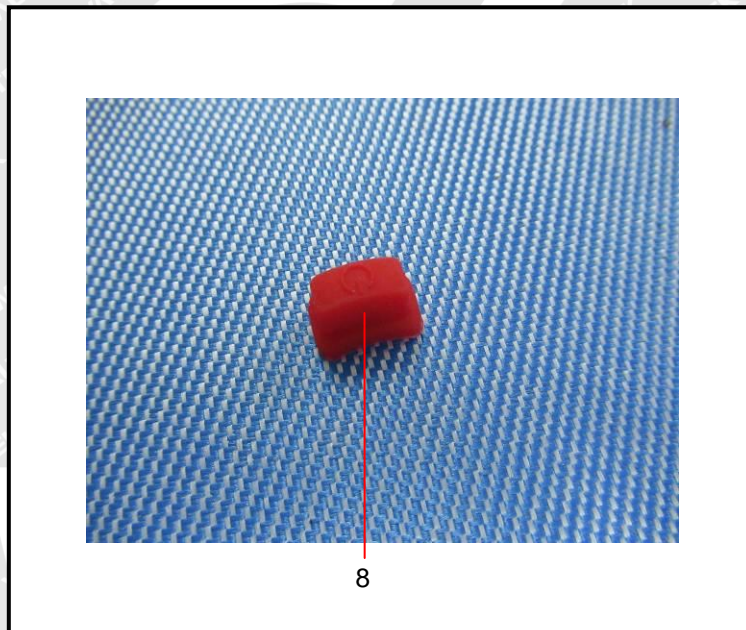
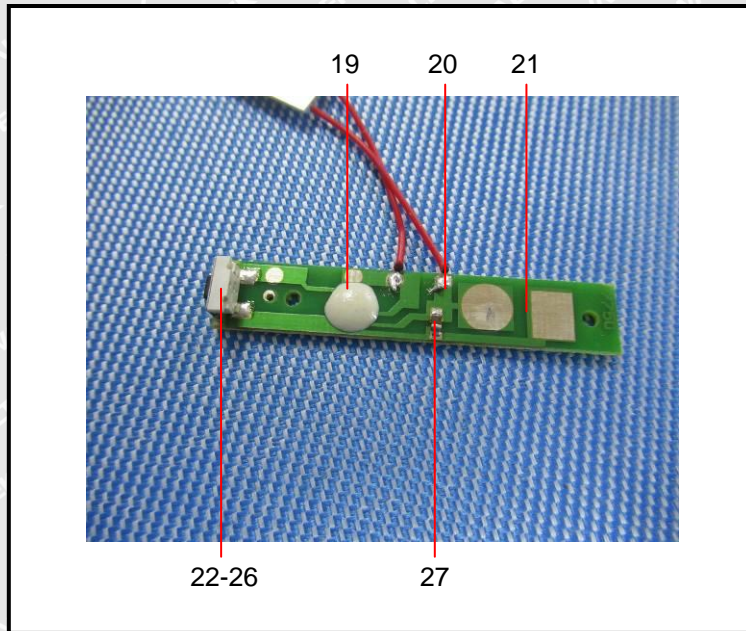
WALTEK



Photograph of parts tested:









==== End of Report ====