

# Test Report

<b>Client</b>	:	[Redacted]
<b>Address</b>	:	[Redacted]

The following sample(s) and sample information was/were submitted and identified by/on the behalf of the client

<b>Sample Name</b>	:	Polymer lithium ion battery
<b>Model/P.O. No.</b>	:	602030-300mAh/ 400909-25mAh/ 401012-30mAh/ 451012-35mAh/ 501012-40mAh/ 501015-50mAh/ 581013-50mAh/ 502030-200mAh/ 601230-200mAh/ 602025-250mAh/ 602035-400mAh/ 602040-400mAh/ 602530-400mAh/ 701230-250mAh/ 702025-300mAh/ 702030-400mAh/ 702530-500mAh/ 801230-300mAh/ 802530-600mAh/ 902030-500mAh
<b>Manufacturer</b>	:	[Redacted]
<b>Received Date</b>	:	Mar 04, 2021
<b>Test Period</b>	:	Mar 04, 2021~Mar 05, 2021
<b>Test Requested</b>	:	EU directive 2006/66/EC and its amendment 2013/56/EU

<b>Conclusion</b>	
- Lead(Pb), Cadmium(Cd), Mercury(Hg)	<b>PASS</b>

For Further Details, Please Refer To the Following Page(s)

Approved by: *Jiwei.Liu*

Date: Mar 10, 2021



**Test Methods**

Test Items	Test Method	Equipment
Lead(Pb), Cadmium(Cd)	IEC 62321-5:2013	ICP-OES
Mercury(Hg)	IEC 62321-4:2013+AMD1:2017	ICP-OES

**Test Results**

Test components	Test Item(s)	MDL (%)	Result(s) (%)	Limit (%)
Lithium ion battery	Lead(Pb)	0.0005	N.D.	--
	Cadmium(Cd)	0.0005	N.D.	0.0020
	Mercury(Hg)	0.0001	N.D.	0.0005

**Note:**

N.D.=Not Detected (<MDL); MDL=method detection limit.

**Test Process:**

Test Lead(Pb) ,Cadmium(Cd) , Mercury(Hg) concentration:

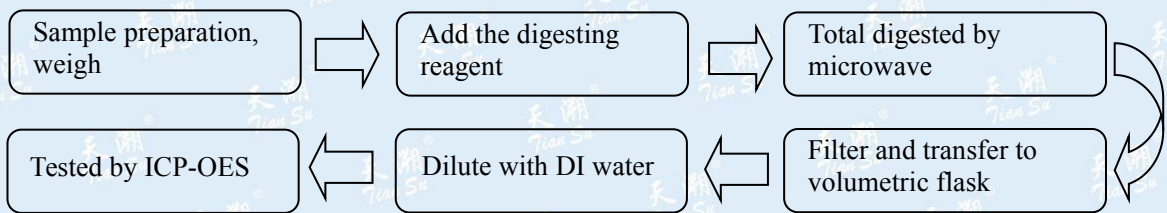
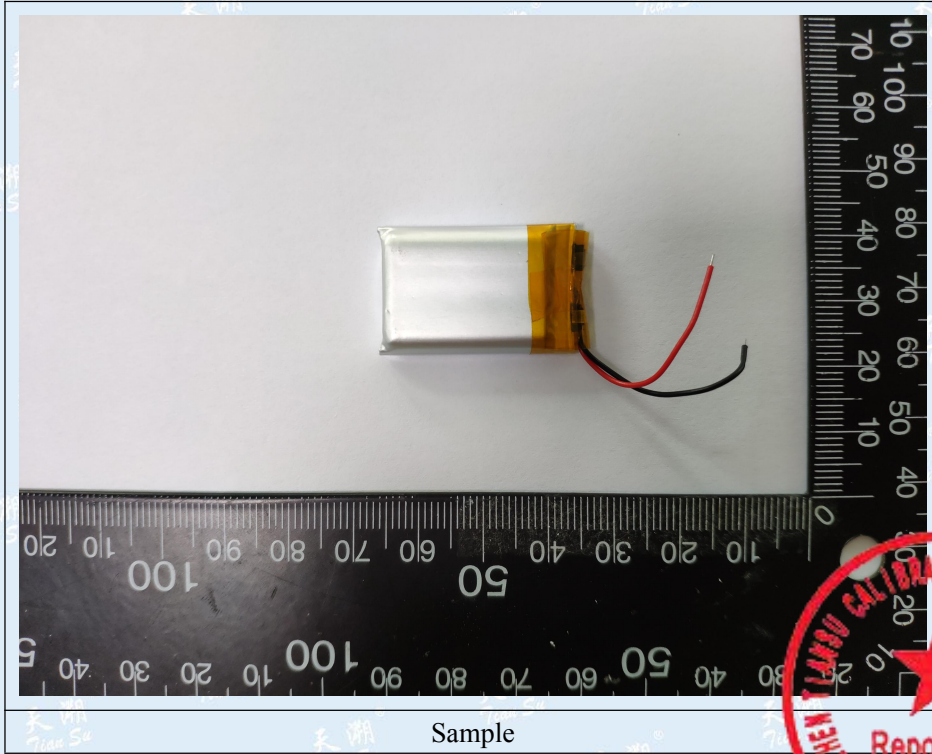


Photo of the sample



Sample



\*\*\*\*\* End of report \*\*\*\*\*

This report is invalid without the Special Seal of Tiansu. This report shall not be altered, increased or deleted. The results shown in this report refer only to the sample(s) tested.



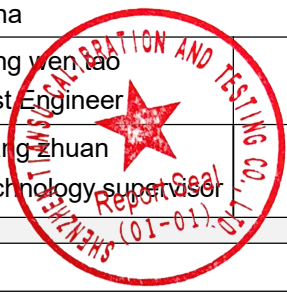


中国认可  
国际互认  
检测  
TESTING  
CNAS L5138

Test Report issued under the responsibility of:



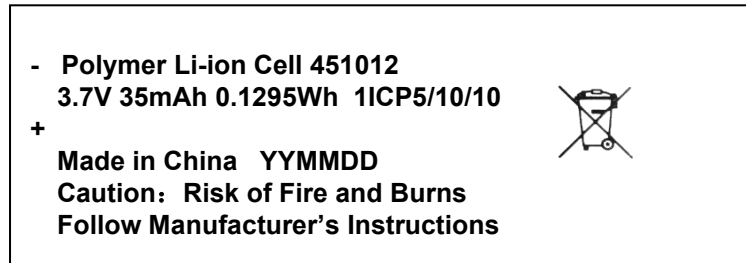
<p><b>TEST REPORT</b> <b>IEC 62133-2</b> <b>Secondary cells and batteries containing alkaline or other non-acid electrolytes – Safety requirements for portable sealed secondary cells, and for batteries made from them, for use in portable applications –Part 2: Lithium systems</b></p>	
Report Number.....:	TCTTJ20210107599ZB-BR02
Date of issue.....:	January 27, 2021
Total number of pages.....:	See page 3 for details
Name of Testing Laboratory preparing the Report.....:	Shenzhen Tiansu Calibration and Testing Co.,Ltd
Applicant's name.....:	
Address.....:	
Test specification:	
Standard.....:	IEC 62133-2:2017
Non-standard test method.....:	N/A
<p><b>Copyright © 2017 IEC System of Conformity Assessment Schemes for Electrotechnical Equipment and Components (IECEE System). All rights reserved.</b></p> <p>This publication may be reproduced in whole or in part for non-commercial purposes as long as the IECEE is acknowledged as copyright owner and source of the material. IECEE takes no responsibility for and will not assume liability for damages resulting from the reader's interpretation of the reproduced material due to its placement and context.</p> <p>If this Test Report Form is used by non-IECEE members, the IECEE/IEC logo and the reference to the CB Scheme procedure shall be removed.</p> <p><b>This report is not valid as a CB Test Report unless signed by an approved CB Testing Laboratory and appended to a CB Test Certificate issued by an NCB in accordance with IECEE 02.</b></p>	
<p><b>General disclaimer:</b></p> <p>The test results presented in this report relate only to the object tested. This report shall not be reproduced, except in full, without the written approval of the Issuing CB Testing Laboratory. The authenticity of this Test Report and its contents can be verified by contacting the NCB, responsible for this Test Report.</p>	

<b>Test item description..... :</b>	Polymer Li-ion Cell	
<b>Trade Mark..... :</b>	N/A	
<b>Manufacturer..... :</b>	Same as applicant	
<b>Model/Type reference..... :</b>	451012	
<b>Ratings..... :</b>	35mAh, 0.1295Wh, 3.7V	
<b>Responsible Testing Laboratory (as applicable), testing procedure and testing location(s):</b>		
<input checked="" type="checkbox"/>	<b>Testing Laboratory:</b>	Shenzhen Tiansu Calibration and Testing Co.,Ltd
	<b>Testing location/ address..... :</b>	B/1,4, NO.2 Jinlong Road, Longgang District, Shenzhen, China
	<b>Tested by (name, function, signature)..... :</b>	Wang wen tao Test Engineer 
	<b>Approved by (name, function, signature)... :</b>	Huang zhuan Technology supervisor 
		
<input type="checkbox"/>	<b>Testing procedure: CTF Stage 1:</b>	
	<b>Testing location/ address..... :</b>	
	<b>Tested by (name, function, signature)..... :</b>	
	<b>Approved by (name, function, signature)... :</b>	
<input type="checkbox"/>	<b>Testing procedure: CTF Stage 2:</b>	
	<b>Testing location/ address..... :</b>	
	<b>Tested by (name + signature)..... :</b>	
	<b>Witnessed by (name, function, signature).. :</b>	
	<b>Approved by (name, function, signature)... :</b>	
<input type="checkbox"/>	<b>Testing procedure: CTF Stage 3:</b>	
<input type="checkbox"/>	<b>Testing procedure: CTF Stage 4:</b>	
	<b>Testing location/ address..... :</b>	
	<b>Tested by (name, function, signature)..... :</b>	
	<b>Witnessed by (name, function, signature).. :</b>	
	<b>Approved by (name, function, signature)... :</b>	
	<b>Supervised by (name, function, signature) :</b>	

<p><b>List of Attachments (including a total number of pages in each attachment):</b></p> <ul style="list-style-type: none"> <li>- Pages 1 to 23 for IEC 62133 TRF (main report)</li> <li>- Attachment 1 (1 Pages): Product Photos</li> </ul>	
<p><b>Summary of testing:</b></p>	
<p><b>Tests performed (name of test and test clause):</b></p> <p>7.1 Charging procedure for test purposes;  7.2.1 Continuous charging at constant voltage (cells);  7.3.1 External short circuit (cell);  7.3.3 Free fall (cell);  7.3.4 Thermal abuse (cells);  7.3.5 Crush (cells);  7.3.7 Forced discharge (cells);  7.3.9 Design evaluation – Forced internal short circuit (cells)</p>	<p><b>Testing location:</b></p> <p>Shenzhen Tiansu Calibration and Testing Co.,Ltd  B/1,4, NO.2 Jinlong Road, Longgang District,  Shenzhen, China</p>
<p><b>Summary of compliance with National Differences (List of countries addressed):</b></p> <p><input checked="" type="checkbox"/> <b>The product fulfils the requirements of IEC 62133-2: 2017 and EN 62133-2: 2017</b></p>	

**Copy of marking plate:**

The artwork below may be only a draft. The use of certification marks on a product must be authorized by the respective NCBs that own these marks.

**Information for safety mentioned on Battery's package.**

Potential for fire or burning. Do not disassemble, puncture, crush, heat or burn.

Use only with specified charger.

Keep small cells and batteries which are considered swallowable out of the reach of children.

Swallowing may lead to burns, perforation of soft tissue, and death. Severe burns can occur within 2h of ingestion.

In case of ingestion of a cell or battery, seek medical assistance promptly.

**Remark:**

Above plate will be printed on the surface of the battery.

The code "YYMMDD" represents that:

YY for Year.

MM for Month.

DD for Day.

<b>Test item particulars..... :</b>	
<b>Classification of installation and use.....:</b>	To be defined in final product
<b>Supply Connection.....:</b>	DC Supply
<b>Recommend charging method declared by the manufacturer.....:</b>	17.5mA constant current charge to 4.2V, then constant voltage 4.2V charge till charge current declines to 0.35mA.
<b>Discharge current (0,2 It A).....:</b>	7mA
<b>Specified final voltage..... :</b>	3.0V
<b>Upper limit charging voltage per cell.....:</b>	4.2V
<b>Maximum charging current..... :</b>	35mA
<b>Charging temperature upper limit.....:</b>	45°C
<b>Charging temperature lower limit..... :</b>	0°C
<b>Polymer cell electrolyte type.....:</b>	<input type="checkbox"/> gel polymer <input type="checkbox"/> solid polymer <input checked="" type="checkbox"/> N/A
<b>Possible test case verdicts:</b>	
- test case does not apply to the test object..... :	N/A
- test object does meet the requirement..... :	P (Pass)
- test object does not meet the requirement..... :	F (Fail)
<b>Testing..... :</b>	
<b>Date of receipt of test item..... :</b>	January 14, 2021
<b>Date (s) of performance of tests..... :</b>	January 14, 2021 to January 22, 2021
<b>General remarks:</b>	
"(See Enclosure #)" refers to additional information appended to the report. "(See appended table)" refers to a table appended to the report.	
Throughout this report a <input type="checkbox"/> comma / <input checked="" type="checkbox"/> point is used as the decimal separator.	
<b>Manufacturer's Declaration per sub-clause 4.2.5 of IEC 60335-1:</b>	
The application for obtaining a CB Test Certificate includes more than one factory location and a declaration from the Manufacturer stating that the sample(s) submitted for evaluation is (are) representative of the products from each factory has been provided.....:	<input type="checkbox"/> Yes <input checked="" type="checkbox"/> Not applicable
<b>When differences exist; they shall be identified in the General product information section.</b>	
<b>Name and address of factory (ies)..... :</b> See applicant	



**General product information and other remarks:**

The cell consists of the positive electrode plate, negative electrode plate, separator, electrolyte, case. The positive and negative electrode plates are housed in the case in the state being separated by the separator.

Model no.	451012
Recommend charging voltage	4.2V
Recommend charging current	17.5mA
Max. charging current	35mA
Recommend discharging voltage	3.0V
Recommend discharging current	17.5mA
Max. discharging current	35mA
Operation Temperature (Charging)	0~45°C

IEC 62133-2			
Clause	Requirement + Test	Result - Remark	Verdict
<b>4</b>	<b>PARAMETER MEASUREMENT TOLERANCES</b>		<b>P</b>
	Parameter measurement tolerances		P
<b>5</b>	<b>GENERAL SAFETY CONSIDERATIONS</b>		<b>P</b>
<b>5.1</b>	<b>General</b>		<b>P</b>
	Cells and batteries so designed and constructed that they are safe under conditions of both intended use and reasonably foreseeable misuse		P
<b>5.2</b>	<b>Insulation and wiring</b>	Cell only.	N/A
	The insulation resistance between the positive terminal and externally exposed metal surfaces of the battery (excluding electrical contact surfaces) is not less than 5 MΩ		N/A
	Insulation resistance (MΩ)..... :		—
	Internal wiring and insulation are sufficient to withstand maximum anticipated current, voltage and temperature requirements		N/A
	Orientation of wiring maintains adequate clearance and creepage distances between conductors		N/A
	Mechanical integrity of internal connections accommodates reasonably foreseeable misuse		N/A
<b>5.3</b>	<b>Venting</b>		<b>P</b>
	Battery cases and cells incorporate a pressure relief mechanism or are constructed so that they relieve excessive internal pressure at a value and rate that will preclude rupture, explosion and self-ignition		P
	Encapsulation used to support cells within an outer casing does not cause the battery to overheat during normal operation nor inhibit pressure relief	No outer casing.	N/A
<b>5.4</b>	<b>Temperature, voltage and current management</b>	Cell only.	N/A
	Batteries are designed such that abnormal temperature rise conditions are prevented		N/A
	Batteries are designed to be within temperature, voltage and current limits specified by the cell manufacturer		N/A
	Batteries are provided with specifications and charging instructions for equipment manufacturers so that specified chargers are designed to maintain charging within the temperature, voltage and current limits specified		N/A
<b>5.5</b>	<b>Terminal contacts</b>		<b>P</b>
	The size and shape of the terminal contacts ensure that they can carry the maximum anticipated current		P

IEC 62133-2			
Clause	Requirement + Test	Result - Remark	Verdict
	External terminal contact surfaces are formed from conductive materials with good mechanical strength and corrosion resistance		P
	Terminal contacts are arranged to minimize the risk of short-circuit		P
<b>5.6</b>	<b>Assembly of cells into batteries</b>	Cell only.	N/A
5.6.1	General		N/A
	Each battery have an independent control and protection for current, voltage, temperature and any other parameter required for safety and to maintain the cells within their operating region		N/A
	This protection may be provided external to the battery such as within the charger or the end devices		N/A
	If protection is external to the battery, the manufacturer of the battery provide this safety relevant information to the external device manufacturer for implementation		N/A
	If there is more than one battery housed in a single battery case, each battery have protective circuitry that can maintain the cells within their operating regions		N/A
	Manufacturers of cells specify current, voltage and temperature limits so that the battery manufacturer/designer may ensure proper design and assembly		N/A
	Batteries that are designed for the selective discharge of a portion of their series connected cells incorporate circuitry to prevent operation of cells outside the limits specified by the cell manufacturer		N/A
	Protective circuit components added as appropriate and consideration given to the end-device application		N/A
	The manufacturer of the battery provide a safety analysis of the battery safety circuitry with a test report including a fault analysis of the protection circuit under both charging and discharging conditions confirming the compliance		N/A
5.6.2	Design recommendation		N/A
	For the battery consisting of a single cell or a single cellblock, it is recommended that the charging voltage of the cell does not exceed the upper limit of the charging voltage specified in Table 2		N/A

IEC 62133-2			
Clause	Requirement + Test	Result - Remark	Verdict
	For the battery consisting of series-connected plural single cells or series-connected plural cellblocks, it is recommended that the voltages of any one of the single cells or single cellblocks does not exceed the upper limit of the charging voltage, specified in Table 2, by monitoring the voltage of every single cell or the single cellblocks		N/A
	For the battery consisting of series-connected plural single cells or series-connected plural cellblocks, it is recommended that charging is stopped when the upper limit of the charging voltage is exceeded for any one of the single cells or single cellblocks by measuring the voltage of every single cell or the single cellblocks		N/A
	For batteries consisting of series-connected cells or cell blocks, nominal charge voltage not be counted as an overcharge protection		N/A
	For batteries consisting of series-connected cells or cell blocks, cells have closely matched capacities, be of the same design, be of the same chemistry and be from the same manufacturer		N/A
	It is recommended that the cells and cell blocks not discharged beyond the cell manufacturer's specified final voltage		N/A
	For batteries consisting of series-connected cells or cell blocks, cell balancing circuitry incorporated into the battery management system		N/A
5.6.3	Mechanical protection for cells and components of batteries		N/A
	Mechanical protection for cells, cell connections and control circuits within the battery provided to prevent damage as a result of intended use and reasonably foreseeable misuse		N/A
	The mechanical protection can be provided by the battery case or it can be provided by the end product enclosure for those batteries intended for building into an end product		N/A
	The battery case and compartments housing cells designed to accommodate cell dimensional tolerances during charging and discharging as recommended by the cell manufacturer		N/A
	For batteries intended for building into a portable end product, testing with the battery installed within the end product considered when conducting mechanical tests		N/A
<b>5.7</b>	<b>Quality plan</b>		N/A

IEC 62133-2			
Clause	Requirement + Test	Result - Remark	Verdict
	The manufacturer prepares and implements a quality plan that defines procedures for the inspection of materials, components, cells and batteries and which covers the whole process of producing each type of cell or battery		N/A
<b>5.8</b>	<b>Battery safety components</b>		N/A
	According annex F		N/A

<b>6</b>	<b>TYPE TEST AND SAMPLE SIZE</b>		<b>P</b>
	Tests are made with the number of cells or batteries specified in Table 1 using cells or batteries that are not more than six months old	Tests are performed according to specified in Table 1 of this standard. The samples are not more than six months old.	P
	Coin cells with resistance $\leq 3 \Omega$ (measured according annex D) are tested according table 1	Not coin cell.	N/A
	Unless otherwise specified, tests are carried out in an ambient temperature of $20 \text{ }^\circ\text{C} \pm 5 \text{ }^\circ\text{C}$		P
	The safety analysis of 5.6.1 identify those components of the protection circuit that are critical for short-circuit, overcharge and overdischarge protection		N/A
	When conducting the short-circuit test, consideration given to the simulation of any single fault condition that is likely to occur in the protecting circuit that would affect the short-circuit test		N/A

<b>7</b>	<b>SPECIFIC REQUIREMENTS AND TESTS</b>		<b>P</b>
<b>7.1</b>	<b>Charging procedure for test purposes</b>		<b>P</b>
7.1.1	First procedure		P
	This charging procedure applies to subclauses other than those specified in 7.1.2		P
	Unless otherwise stated in this document, the charging procedure for test purposes is carried out in an ambient temperature of $20 \text{ }^\circ\text{C} \pm 5 \text{ }^\circ\text{C}$ , using the method declared by the manufacturer		P
	Prior to charging, the battery have been discharged at $20 \text{ }^\circ\text{C} \pm 5 \text{ }^\circ\text{C}$ at a constant current of 0,2 It A down to a specified final voltage		P
7.1.2	Second procedure		P
	This charging procedure applies only to 7.3.1, 7.3.4, 7.3.5, and 7.3.9		P

IEC 62133-2			
Clause	Requirement + Test	Result - Remark	Verdict
	After stabilization for 1 h and 4 h, respectively, at ambient temperature of highest test temperature and lowest test temperature, as specified in Table 2, cells are charged by using the upper limit charging voltage and maximum charging current, until the charging current is reduced to 0,05 It A, using a constant voltage charging method	Charging temperature specified by client is 0-45°C, 45°C and 0°C were used as highest test temperature and lowest test temperature during tests. The upper limit charging voltage is 4.2V. The maximum charging current is 35mA.	P
<b>7.2</b>	<b>Intended use</b>		P
7.2.1	Continuous charging at constant voltage (cells)	Tested complied.	P
	Fully charged cells are subjected for 7 days to a charge using the charging method for current and standard voltage specified by the cell manufacturer		P
	Results: No fire. No explosion. No leakage..... :	(See appended table 7.2.1)	P
7.2.2	Case stress at high ambient temperature (battery)	Cell only.	N/A
	Oven temperature (°C)..... :		—
	Results: No physical distortion of the battery case resulting in exposure of internal protective components and cells		N/A
<b>7.3</b>	<b>Reasonably foreseeable misuse</b>		P
7.3.1	External short-circuit (cell)	Tested complied.	P
	The cells were tested until one of the following occurred:		P
	- 24 hours elapsed; or		N/A
	- The case temperature declined by 20 % of the maximum temperature rise		P
	Results: No fire. No explosion..... :	(See appended table 7.3.1)	P
7.3.2	External short-circuit (battery)	Cell only.	N/A
	The batteries were tested until one of the following occurred:		N/A
	- 24 hours elapsed; or		N/A
	- The case temperature declined by 20 % of the maximum temperature rise		N/A
	In case of rapid decline in short circuit current, the battery pack remained on test for an additional one hour after the current reached a low end steady state condition		N/A
	A single fault in the discharge protection circuit conducted on one to four (depending upon the protection circuit) of the five samples before conducting the short-circuit test		N/A

IEC 62133-2			
Clause	Requirement + Test	Result - Remark	Verdict
	A single fault applies to protective component parts such as MOSFET, fuse, thermostat or positive temperature coefficient (PTC) thermistor		N/A
	Results: No fire. No explosion..... :		N/A
7.3.3	Free fall	Tested complied.	P
	Results: No fire. No explosion		P
7.3.4	Thermal abuse (cells)	Tested complied.	P
	Oven temperature (°C)..... :	130	—
	Results: No fire. No explosion		P
7.3.5	Crush (cells)	Tested complied.	P
	The crushing force was released upon:		P
	- The maximum force of 13 kN ± 0,78 kN has been applied; or		P
	- An abrupt voltage drop of one-third of the original voltage has been obtained		N/A
	Results: No fire. No explosion..... :	(See appended table 7.3.5)	P
7.3.6	Over-charging of battery	Cell only.	N/A
	The supply voltage which is:		N/A
	- 1,4 times the upper limit charging voltage presented in Table A.1 (but not to exceed 6,0 V) for single cell/cell block batteries or		N/A
	- 1,2 times the upper limit charging voltage resented in Table A.1 per cell for series connected multi-cell batteries, and		N/A
	- Sufficient to maintain a current of 2,0 It A throughout the duration of the test or until the supply voltage is reached		N/A
	Test was continued until the temperature of the outer casing:		N/A
	- Reached steady state conditions (less than 10 °C change in 30-minute period); or		N/A
	- Returned to ambient		N/A
	Results: No fire. No explosion..... :		N/A
7.3.7	Forced discharge (cells)	Tested complied.	P
	If the discharge voltage reaches the negative value of upper limit charging voltage within the testing duration, the voltage is maintained at the negative value of the upper limit charging voltage by reducing the current for the remainder of the testing duration		N/A
	If the discharge voltage does not reach the negative value of upper limit charging voltage within the testing duration, the test is terminated at the end of the testing duration		P

IEC 62133-2			
Clause	Requirement + Test	Result - Remark	Verdict
	Results: No fire. No explosion..... :	(See appended table 7.3.7)	P
7.3.8	Mechanical tests (batteries)	Cell only.	N/A
7.3.8.1	Vibration		N/A
	Results: No fire, no explosion, no rupture, no leakage or venting..... :		N/A
7.3.8.2	Mechanical shock	Cell only.	N/A
	Results: No leakage, no venting, no rupture, no explosion and no fire..... :		N/A
7.3.9	Design evaluation – Forced internal short-circuit (cells)	Tested complied.	P
	The cells complied with national requirement for..... :	France, Japan, Republic of Korea, Switzerland	—
	The pressing was stopped upon:		P
	- A voltage drop of 50 mV has been detected; or		N/A
	- The pressing force of 800 N (cylindrical cells) or 400 N (prismatic cells) has been reached	400 N for prismatic cells.	P
	Results: No fire..... :	(See appended table 7.3.9)	P
<b>8</b>	<b>INFORMATION FOR SAFETY</b>		P
<b>8.1</b>	<b>General</b>		P
	Manufacturers of secondary cells ensure that information is provided about current, voltage and temperature limits of their products	Information for safety mentioned in manufacturer's specifications	P
	Manufacturers of batteries ensure that equipment manufacturers and, in the case of direct sales, end-users are provided with information to minimize and mitigate hazards		N/A
	Systems analyses performed by device manufacturers to ensure that a particular battery design prevents hazards from occurring during use of a product		N/A
	As appropriate, any information relating to hazard avoidance resulting from a system analysis provided to the end user		N/A
	Do not allow children to replace batteries without adult supervision		N/A
<b>8.2</b>	<b>Small cell and battery safety information</b>		P
	The following warning language is to be provided with the information packaged with the small cells and batteries or equipment using them:		P
	- Keep small cells and batteries which are considered swallowable out of the reach of children		P



IEC 62133-2			
Clause	Requirement + Test	Result - Remark	Verdict
	- Swallowing may lead to burns, perforation of soft tissue, and death. Severe burns can occur within 2 h of ingestion		P
	- In case of ingestion of a cell or battery, seek medical assistance promptly		P
<b>9</b>	<b>MARKING</b>		P
<b>9.1</b>	<b>Cell marking</b>		P
	Cells marked as specified in IEC 61960, except coin cells	The battery is marked in according with IEC 61960.	P
	Coin cells whose external surface area is too small to accommodate the markings on the cells show the designation and polarity		N/A
	By agreement between the cell manufacturer and the battery and/or end product manufacturer, component cells used in the manufacture of a battery need not be marked		N/A
<b>9.2</b>	<b>Battery marking</b>	Cell only.	N/A
	Batteries marked as specified in IEC 61960, except for coin batteries		N/A
	Coin batteries whose external surface area is too small to accommodate the markings on the batteries show the designation and polarity. Batteries also marked with an appropriate caution statement		N/A
	Terminals have clear polarity marking on the external surface of the battery		N/A
	Batteries with keyed external connectors designed for connection to specific end products need not be marked with polarity markings if the design of the external connector prevents reverse polarity connections		N/A
<b>9.3</b>	<b>Caution for ingestion of small cells and batteries</b>		P
	Coin cells and batteries identified as small batteries according to 8.2 include a caution statement regarding the hazards of ingestion in accordance with 8.2	Not coin cells and batteries.	N/A
	When small cells and batteries are intended for direct sale in consumer-replaceable applications, caution for ingestion given on the immediate package		P
<b>9.4</b>	<b>Other information</b>		P
	Storage and disposal instructions		P
	Recommended charging instructions		P

IEC 62133-2			
Clause	Requirement + Test	Result - Remark	Verdict
<b>10</b>	<b>PACKAGING AND TRANSPORT</b>		N/A
	Packaging for coin cells not small enough to fit within the limits of the ingestion gauge of Figure 3	Not coin cells	N/A
	The materials and packaging design are chosen so as to prevent the development of unintentional electrical conduction, corrosion of the terminals and ingress of environmental contaminants		N/A

<b>ANNEX A</b>	<b>CHARGING AND DISCHARGING RANGE OF SECONDARY LITHIUM ION CELLS FOR SAFE USE</b>		P
<b>A.1</b>	<b>General</b>		P
<b>A.2</b>	<b>Safety of lithium ion secondary battery</b>		P
<b>A.3</b>	<b>Consideration on charging voltage</b>		P
A.3.1	General		P
A.3.2	Upper limit charging voltage	Upper limit charging voltage of cell is 4.2V.	P
A.3.2.1	General		P
A.3.2.2	Explanation of safety viewpoint		N/A
A.3.2.3	Safety requirements, when different upper limit charging voltage is applied	4.2V applied.	N/A
<b>A.4</b>	<b>Consideration of temperature and charging current</b>		P
A.4.1	General		P
A.4.2	Recommended temperature range	Charging temperature range declared by client is 0-45°C	P
A.4.2.1	General		P
A.4.2.2	Safety consideration when a different recommended temperature range is applied		N/A
A.4.3	High temperature range	45°C applied.	N/A
A.4.3.1	General		N/A
A.4.3.2	Explanation of safety viewpoint		N/A
A.4.3.3	Safety considerations when specifying charging conditions in the high temperature range		N/A
A.4.3.4	Safety considerations when specifying a new upper limit in the high temperature range		N/A
A.4.4	Low temperature range	0°C applied	N/A
A.4.4.1	General		N/A
A.4.4.2	Explanation of safety viewpoint		N/A
A.4.4.3	Safety considerations, when specifying charging conditions in the low temperature range		N/A

IEC 62133-2			
Clause	Requirement + Test	Result - Remark	Verdict
A.4.4.4	Safety considerations when specifying a new lower limit in the low temperature range		N/A
A.4.5	Scope of the application of charging current		P
A.4.6	Consideration of discharge		P
A.4.6.1	General		P
A.4.6.2	Final discharge voltage and explanation of safety viewpoint		P
A.4.6.3	Discharge current and temperature range		P
A.4.6.4	Scope of application of the discharging current		P
<b>A.5</b>	<b>Sample preparation</b>		P
A.5.1	General		P
A.5.2	Insertion procedure for nickel particle to generate internal short		P
A.5.3	Disassembly of charged cell		P
A.5.4	Shape of nickel particle		P
A.5.5	Insertion of nickel particle in cylindrical cell		N/A
A.5.5.1	Insertion of nickel particle in winding core		N/A
A.5.5.2	Marking the position of the nickel particle on both ends of the winding core of the separator		N/A
A.5.6	Insertion of nickel particle in prismatic cell		P
<b>A.6</b>	<b>Experimental procedure of the forced internal short-circuit test</b>		P
A.6.1	Material and tools for preparation of nickel particle		P
A.6.2	Example of a nickel particle preparation procedure		P
A.6.3	Positioning (or placement) of a nickel particle		P
A.6.4	Damaged separator precaution		P
A.6.5	Caution for rewinding separator and electrode		P
A.6.6	Insulation film for preventing short-circuit		P
A.6.7	Caution when disassembling a cell		P
A.6.8	Protective equipment for safety		P
A.6.9	Caution in the case of fire during disassembling		P
A.6.10	Caution for the disassembling process and pressing the electrode core		P
A.6.11	Recommended specifications for the pressing device		P
<b>ANNEX B</b>	<b>RECOMMENDATIONS TO EQUIPMENT MANUFACTURERS AND BATTERY ASSEMBLERS</b>		P
<b>ANNEX C</b>	<b>RECOMMENDATIONS TO THE END-USERS</b>		P

IEC 62133-2			
Clause	Requirement + Test	Result - Remark	Verdict

<b>ANNEX D</b>		<b>MEASUREMENT OF THE INTERNAL AC RESISTANCE FOR COIN CELLS</b>		N/A
<b>D.1</b>	<b>General</b>			N/A
<b>D.2</b>	<b>Method</b>			N/A
	A sample size of three coin cells is required for this measurement.....:	(See appended table D.2)		N/A
	Coin cells with an internal resistance of less than or equal to 3 $\Omega$ are subjected to the testing according to Clause 6 and Table 1			N/A
	Coin cells with an internal resistance greater than 3 $\Omega$ require no further testing			N/A

<b>ANNEX E</b>		<b>PACKAGING AND TRANSPORT</b>		N/A
----------------	--	--------------------------------	--	-----

<b>ANNEX F</b>		<b>COMPONENT STANDARDS REFERENCES</b>		N/A
----------------	--	---------------------------------------	--	-----



IEC 62133-2			
Clause	Requirement + Test	Result - Remark	Verdict

7.2.1	TABLE: Continuous charging at constant voltage (cells)				P
Sample no.	Recommended charging voltage Vc (Vdc)	Recommended charging current I <sub>rec</sub> (A)	OCV before test (Vdc)	Results	
C1#	4.20	0.0175	4.188	P	
C2#	4.20	0.0175	4.187	P	
C3#	4.20	0.0175	4.187	P	
C4#	4.20	0.0175	4.188	P	
C5#	4.20	0.0175	4.187	P	
<b>Supplementary information:</b>					
- No fire or explosion					
- No leakage					
- The ambient temperature is 22.7°C					

7.3.1	TABLE: External short-circuit (cell)					P
Sample no.	Ambient T (°C)	OCV before test (Vdc)	Resistance of circuit (mΩ)	Maximum case temperature rise ΔT (K)	Results	
<b>Samples charged at charging temperature upper limit<sup>1)</sup></b>						
C6#	54.6	4.152	82.6	84.7	P	
C7#	54.6	4.149	82.8	89.1	P	
C8#	54.6	4.151	82.5	88.6	P	
C9#	54.6	4.156	83.1	92.3	P	
C10#	54.6	4.154	82.2	95.8	P	
C11#	55.3	4.082	82.5	99.4	P	
C12#	55.3	4.076	82.3	101.2	P	
C13#	55.3	4.078	82.6	93.3	P	
C14#	55.3	4.079	83.1	95.5	P	
C15#	55.3	4.081	82.9	91.9	P	
<b>Supplementary information:</b>						
- No fire or explosion						
<sup>1)</sup> Cells charged at 45°C						
<sup>2)</sup> Cells charged at 0°C						

IEC 62133-2						
Clause	Requirement + Test				Result - Remark	Verdict
<b>7.3.2</b>	<b>TABLE: External short-circuit (battery)</b>					<b>N/A</b>
Sample no.	Ambient T (°C)	OCV before test (Vdc)	Resistance of circuit (mΩ)	Maximum case temperature rise $\Delta T$ (K)	Component single fault condition	Results
<b>Supplementary information:</b>						

<b>7.3.5</b>	<b>TABLE: Crush (cells)</b>				<b>P</b>
Sample no.	OCV before test (Vdc)	OCV at removal of crushing force (Vdc)	Maximum force applied to the cell during crush (kN)	Results	
<b>Samples charged at charging temperature upper limit<sup>1)</sup></b>					
C29#	4.146	4.146	13.01	P	
C30#	4.143	4.143	13.05	P	
C31#	4.149	4.149	13.08	P	
C32#	4.147	4.147	13.11	P	
C33#	4.151	4.151	13.05	P	
<b>Samples charged at charging temperature lower limit<sup>2)</sup></b>					
C34#	4.081	4.081	13.07	P	
C35#	4.074	4.074	13.03	P	
C36#	4.076	4.076	12.98	P	
C37#	4.077	4.077	13.05	P	
C38#	4.072	4.072	12.92	P	
<b>Supplementary information:</b>					
- No fire or explosion					
1) Cells charged at 45°C					
2) Cells charged at 0°C					
- The ambient temperature is 21.3°C					

IEC 62133-2				
Clause	Requirement + Test	Result - Remark		Verdict
7.3.6	<b>TABLE: Over-charging of battery</b>			<b>N/A</b>
Constant charging current (A).....:				—
Supply voltage (Vdc).....:				—
Sample no.	OCV before charging (Vdc)	Total charging time (minute)	Maximum outer case temperature (°C)	Results
<b>Supplementary information:</b>				

7.3.7	<b>TABLE: Forced discharge (cells)</b>				<b>P</b>
Sample no.	OCV before application of reverse charge (Vdc)	Measured reverse charge $I_t$ (A)	Time for reversed charge, (minutes)	Results	
C39#	3.447	0.035	90	P	
C40#	3.451	0.035	90	P	
C41#	3.449	0.035	90	P	
C42#	3.453	0.035	90	P	
C43#	3.456	0.035	90	P	
<b>Supplementary information:</b>					
- No fire or explosion					
- The ambient temperature is 22.1°C					

7.3.8.1	<b>TABLE: Vibration</b>					<b>N/A</b>
Sample no.	OCV before test (Vdc)	OCV after test (Vdc)	Mass before test (g)	Mass after test (g)	Results	
<b>Supplementary information:</b>						



IEC 62133-2			
Clause	Requirement + Test	Result - Remark	Verdict

7.3.8.2	TABLE: Mechanical shock					N/A
Sample no.	OCV before test (Vdc)	OCV after test (Vdc)	Mass before test (g)	Mass after test (g)	Results	

**Supplementary information:**

7.3.9	TABLE: Forced internal short circuit (cells)					P
Sample no.	Chamber ambient T (°C)	OCV before test (Vdc)	Particle location <sup>1)</sup>	Maximum applied pressure (N)	Results	
<b>Samples charged at charging temperature upper limit<sup>2)</sup></b>						
C44#	45.0	4.148	1	404.7	P	
C45#	45.0	4.151	1	402.4	P	
C46#	45.0	4.153	1	409.8	P	
C47#	45.0	4.151	1	403.5	P	
C48#	45.0	4.145	1	408.3	P	
<b>Samples charged at charging temperature lower limit<sup>3)</sup></b>						
C49#	0.0	4.072	1	411.6	P	
C50#	0.0	4.069	1	414.1	P	
C51#	0.0	4.075	1	409.8	P	
C52#	0.0	4.073	1	407.9	P	
C53#	0.0	4.078	1	410.2	P	

**Supplementary information:**

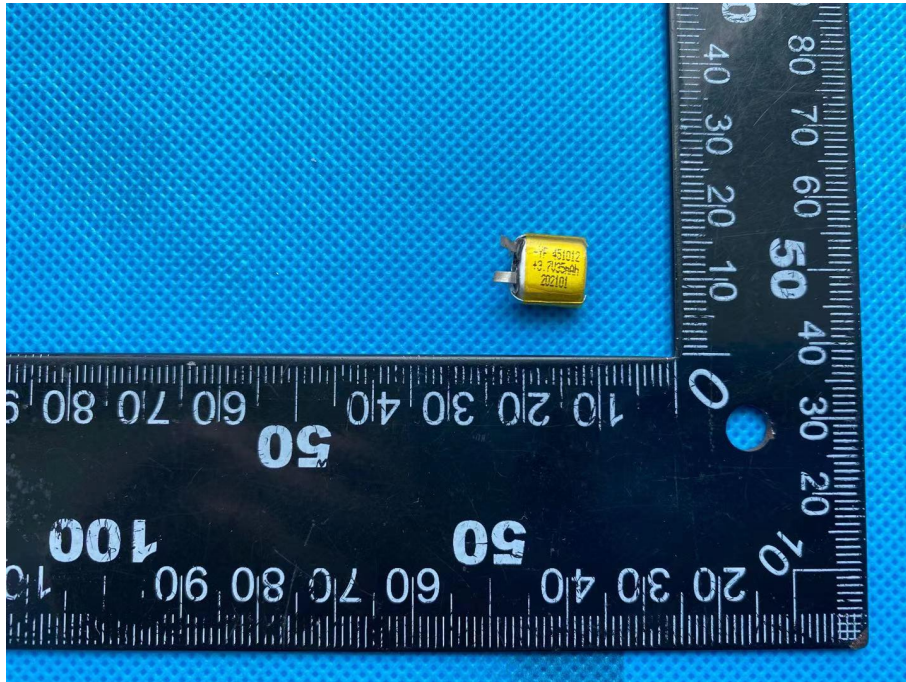
<sup>1)</sup> Identify one of the following:  
1: Nickel particle inserted between positive and negative (active material) coated area.  
2: Nickel particle inserted between positive aluminium foil and negative active material coated area.

<sup>2)</sup> Cells charged at 45°C  
<sup>3)</sup> Cells charged at 0°C

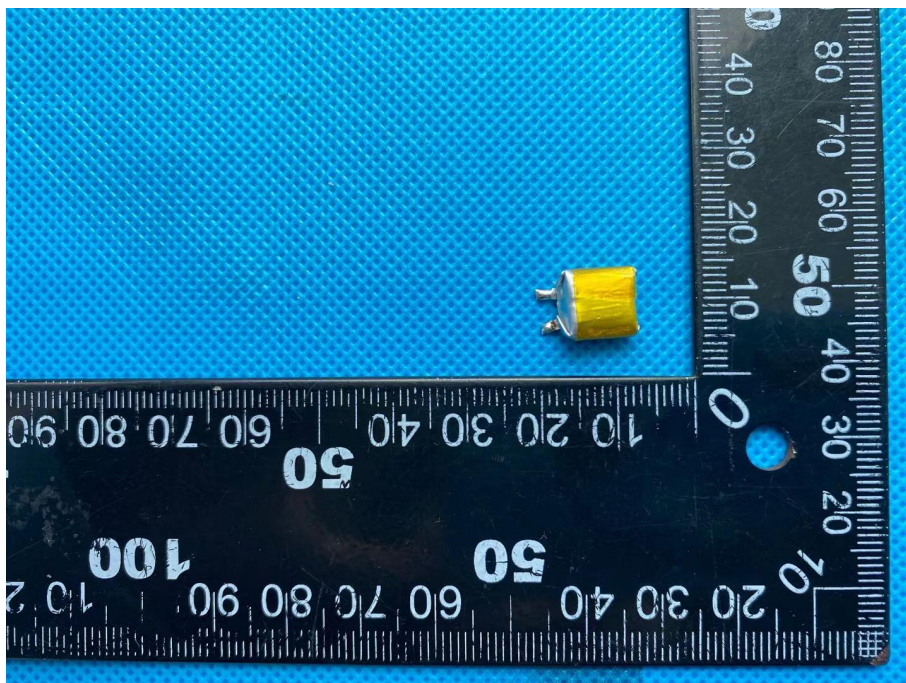
IEC 62133-2			
Clause	Requirement + Test	Result - Remark	Verdict

D.2	TABLE: Internal AC resistance for coin cells			N/A
Sample no.	Ambient T (°C)	Store time (h)	Resistance Rac (Ω)	Results <sup>1)</sup>

**Supplementary information:**  
<sup>1)</sup> Coin cells with internal resistance less than or equal to 3 Ω, see test result on corresponding tables



Front view of cell



Back view of cell



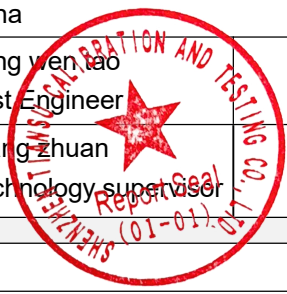


中国认可  
国际互认  
检测  
TESTING  
CNAS L5138

Test Report issued under the responsibility of:



<p><b>TEST REPORT</b> <b>IEC 62133-2</b> <b>Secondary cells and batteries containing alkaline or other non-acid electrolytes – Safety requirements for portable sealed secondary cells, and for batteries made from them, for use in portable applications –Part 2: Lithium systems</b></p>	
Report Number.....:	TCTTJ20210109696ZB-BR05
Date of issue.....:	January 27, 2021
Total number of pages.....:	See page 3 for details
Name of Testing Laboratory preparing the Report.....:	Shenzhen Tiansu Calibration and Testing Co.,Ltd
Applicant's name.....:	
Address.....:	
Test specification:	
Standard.....:	IEC 62133-2:2017
Non-standard test method.....:	N/A
<p><b>Copyright © 2017 IEC System of Conformity Assessment Schemes for Electrotechnical Equipment and Components (IECEE System). All rights reserved.</b></p> <p>This publication may be reproduced in whole or in part for non-commercial purposes as long as the IECEE is acknowledged as copyright owner and source of the material. IECEE takes no responsibility for and will not assume liability for damages resulting from the reader's interpretation of the reproduced material due to its placement and context.</p> <p>If this Test Report Form is used by non-IECEE members, the IECEE/IEC logo and the reference to the CB Scheme procedure shall be removed.</p> <p><b>This report is not valid as a CB Test Report unless signed by an approved CB Testing Laboratory and appended to a CB Test Certificate issued by an NCB in accordance with IECEE 02.</b></p>	
<p><b>General disclaimer:</b></p> <p>The test results presented in this report relate only to the object tested. This report shall not be reproduced, except in full, without the written approval of the Issuing CB Testing Laboratory. The authenticity of this Test Report and its contents can be verified by contacting the NCB, responsible for this Test Report.</p>	

<b>Test item description..... :</b>	Polymer Li-ion Cell	
<b>Trade Mark..... :</b>	N/A	
<b>Manufacturer..... :</b>	Same as applicant	
<b>Model/Type reference..... :</b>	602025	
<b>Ratings..... :</b>	250mAh, 0.925Wh, 3.7V	
<b>Responsible Testing Laboratory (as applicable), testing procedure and testing location(s):</b>		
<input checked="" type="checkbox"/>	<b>Testing Laboratory:</b>	Shenzhen Tiansu Calibration and Testing Co.,Ltd
	<b>Testing location/ address..... :</b>	B/1,4, NO.2 Jinlong Road, Longgang District, Shenzhen, China
	<b>Tested by (name, function, signature)..... :</b>	Wang wen tao Test Engineer 
	<b>Approved by (name, function, signature)... :</b>	Huang zhuan Technology supervisor 
		
<input type="checkbox"/>	<b>Testing procedure: CTF Stage 1:</b>	
	<b>Testing location/ address..... :</b>	
	<b>Tested by (name, function, signature)..... :</b>	
	<b>Approved by (name, function, signature)... :</b>	
<input type="checkbox"/>	<b>Testing procedure: CTF Stage 2:</b>	
	<b>Testing location/ address..... :</b>	
	<b>Tested by (name + signature)..... :</b>	
	<b>Witnessed by (name, function, signature).. :</b>	
	<b>Approved by (name, function, signature)... :</b>	
<input type="checkbox"/>	<b>Testing procedure: CTF Stage 3:</b>	
<input type="checkbox"/>	<b>Testing procedure: CTF Stage 4:</b>	
	<b>Testing location/ address..... :</b>	
	<b>Tested by (name, function, signature)..... :</b>	
	<b>Witnessed by (name, function, signature).. :</b>	
	<b>Approved by (name, function, signature)... :</b>	
	<b>Supervised by (name, function, signature) :</b>	

<p><b>List of Attachments (including a total number of pages in each attachment):</b></p> <ul style="list-style-type: none"> <li>- Pages 1 to 23 for IEC 62133 TRF (main report)</li> <li>- Attachment 1 (1 Pages): Product Photos</li> </ul>	
<p><b>Summary of testing:</b></p>	
<p><b>Tests performed (name of test and test clause):</b></p> <p>7.1 Charging procedure for test purposes;  7.2.1 Continuous charging at constant voltage (cells);  7.3.1 External short circuit (cell);  7.3.3 Free fall (cell);  7.3.4 Thermal abuse (cells);  7.3.5 Crush (cells);  7.3.7 Forced discharge (cells);  7.3.9 Design evaluation – Forced internal short circuit (cells)</p>	<p><b>Testing location:</b></p> <p>Shenzhen Tiansu Calibration and Testing Co.,Ltd  B/1,4, NO.2 Jinlong Road, Longgang District,  Shenzhen, China</p>
<p><b>Summary of compliance with National Differences (List of countries addressed):</b></p> <p><input checked="" type="checkbox"/> <b>The product fulfils the requirements of IEC 62133-2: 2017 and EN 62133-2: 2017</b></p>	

**Copy of marking plate:**

The artwork below may be only a draft. The use of certification marks on a product must be authorized by the respective NCBs that own these marks.

**Polymer Li-ion Cell 602025  
3.7V 250mAh 0.0925Wh 1ICP6/20/25**



**Red wire “+” Black wire “-”  
Made in China YYMMDD  
Caution: Risk of Fire and Burns  
Follow Manufacturer’s Instructions**

**Information for safety mentioned on Battery’s package.**

Potential for fire or burning. Do not disassemble, puncture, crush, heat or burn.

Use only with specified charger.

Keep small cells and batteries which are considered swallowable out of the reach of children.

Swallowing may lead to burns, perforation of soft tissue, and death. Severe burns can occur within 2h of ingestion.

In case of ingestion of a cell or battery, seek medical assistance promptly.

**Remark:**

Above plate will be printed on the surface of the battery.

The code “YYMMDD” represents that:

YY for Year.

MM for Month.

DD for Day.

<b>Test item particulars..... :</b>	
<b>Classification of installation and use.....:</b>	To be defined in final product
<b>Supply Connection.....:</b>	DC Supply
<b>Recommend charging method declared by the manufacturer.....:</b>	125mA constant current charge to 4.2V, then constant voltage 4.2V charge till charge current declines to 02.5mA.
<b>Discharge current (0,2 It A).....:</b>	50mA
<b>Specified final voltage..... :</b>	3.0V
<b>Upper limit charging voltage per cell.....:</b>	4.2V
<b>Maximum charging current..... :</b>	250mA
<b>Charging temperature upper limit.....:</b>	45°C
<b>Charging temperature lower limit..... :</b>	5°C
<b>Polymer cell electrolyte type.....:</b>	<input type="checkbox"/> gel polymer <input type="checkbox"/> solid polymer <input checked="" type="checkbox"/> N/A
<b>Possible test case verdicts:</b>	
- test case does not apply to the test object..... :	N/A
- test object does meet the requirement..... :	P (Pass)
- test object does not meet the requirement..... :	F (Fail)
<b>Testing..... :</b>	
<b>Date of receipt of test item..... :</b>	January 19, 2021
<b>Date (s) of performance of tests..... :</b>	January 19, 2021 to January 26, 2021
<b>General remarks:</b>	
"(See Enclosure #)" refers to additional information appended to the report. "(See appended table)" refers to a table appended to the report.	
Throughout this report a <input type="checkbox"/> comma / <input checked="" type="checkbox"/> point is used as the decimal separator.	
<b>Manufacturer's Declaration per sub-clause 4.2.5 of IEC62133:</b>	
The application for obtaining a CB Test Certificate includes more than one factory location and a declaration from the Manufacturer stating that the sample(s) submitted for evaluation is (are) representative of the products from each factory has been provided.....:	<input type="checkbox"/> Yes <input checked="" type="checkbox"/> Not applicable
<b>When differences exist; they shall be identified in the General product information section.</b>	
<b>Name and address of factory (ies)..... :</b>	See applicant



**General product information and other remarks:**

The cell consists of the positive electrode plate, negative electrode plate, separator, electrolyte, case. The positive and negative electrode plates are housed in the case in the state being separated by the separator.

Model no.	602025
Recommend charging voltage	4.2V
Recommend charging current	125mA
Max. charging current	250mA
Recommend discharging voltage	3.0V
Recommend discharging current	125mA
Max. discharging current	250mA
Operation Temperature (Charging)	5~45°C

IEC 62133-2			
Clause	Requirement + Test	Result - Remark	Verdict
<b>4</b>	<b>PARAMETER MEASUREMENT TOLERANCES</b>		<b>P</b>
	Parameter measurement tolerances		P
<b>5</b>	<b>GENERAL SAFETY CONSIDERATIONS</b>		<b>P</b>
<b>5.1</b>	<b>General</b>		<b>P</b>
	Cells and batteries so designed and constructed that they are safe under conditions of both intended use and reasonably foreseeable misuse		P
<b>5.2</b>	<b>Insulation and wiring</b>	Cell only.	<b>N/A</b>
	The insulation resistance between the positive terminal and externally exposed metal surfaces of the battery (excluding electrical contact surfaces) is not less than 5 MΩ		N/A
	Insulation resistance (MΩ)..... :		—
	Internal wiring and insulation are sufficient to withstand maximum anticipated current, voltage and temperature requirements		N/A
	Orientation of wiring maintains adequate clearance and creepage distances between conductors		N/A
	Mechanical integrity of internal connections accommodates reasonably foreseeable misuse		N/A
<b>5.3</b>	<b>Venting</b>		<b>P</b>
	Battery cases and cells incorporate a pressure relief mechanism or are constructed so that they relieve excessive internal pressure at a value and rate that will preclude rupture, explosion and self-ignition		P
	Encapsulation used to support cells within an outer casing does not cause the battery to overheat during normal operation nor inhibit pressure relief	No outer casing.	N/A
<b>5.4</b>	<b>Temperature, voltage and current management</b>	Cell only.	<b>N/A</b>
	Batteries are designed such that abnormal temperature rise conditions are prevented		N/A
	Batteries are designed to be within temperature, voltage and current limits specified by the cell manufacturer		N/A
	Batteries are provided with specifications and charging instructions for equipment manufacturers so that specified chargers are designed to maintain charging within the temperature, voltage and current limits specified		N/A
<b>5.5</b>	<b>Terminal contacts</b>		<b>P</b>
	The size and shape of the terminal contacts ensure that they can carry the maximum anticipated current		P

IEC 62133-2			
Clause	Requirement + Test	Result - Remark	Verdict
	External terminal contact surfaces are formed from conductive materials with good mechanical strength and corrosion resistance		P
	Terminal contacts are arranged to minimize the risk of short-circuit		P
<b>5.6</b>	<b>Assembly of cells into batteries</b>	Cell only.	N/A
5.6.1	General		N/A
	Each battery have an independent control and protection for current, voltage, temperature and any other parameter required for safety and to maintain the cells within their operating region		N/A
	This protection may be provided external to the battery such as within the charger or the end devices		N/A
	If protection is external to the battery, the manufacturer of the battery provide this safety relevant information to the external device manufacturer for implementation		N/A
	If there is more than one battery housed in a single battery case, each battery have protective circuitry that can maintain the cells within their operating regions		N/A
	Manufacturers of cells specify current, voltage and temperature limits so that the battery manufacturer/designer may ensure proper design and assembly		N/A
	Batteries that are designed for the selective discharge of a portion of their series connected cells incorporate circuitry to prevent operation of cells outside the limits specified by the cell manufacturer		N/A
	Protective circuit components added as appropriate and consideration given to the end-device application		N/A
	The manufacturer of the battery provide a safety analysis of the battery safety circuitry with a test report including a fault analysis of the protection circuit under both charging and discharging conditions confirming the compliance		N/A
5.6.2	Design recommendation		N/A
	For the battery consisting of a single cell or a single cellblock, it is recommended that the charging voltage of the cell does not exceed the upper limit of the charging voltage specified in Table 2		N/A

IEC 62133-2			
Clause	Requirement + Test	Result - Remark	Verdict
	For the battery consisting of series-connected plural single cells or series-connected plural cellblocks, it is recommended that the voltages of any one of the single cells or single cellblocks does not exceed the upper limit of the charging voltage, specified in Table 2, by monitoring the voltage of every single cell or the single cellblocks		N/A
	For the battery consisting of series-connected plural single cells or series-connected plural cellblocks, it is recommended that charging is stopped when the upper limit of the charging voltage is exceeded for any one of the single cells or single cellblocks by measuring the voltage of every single cell or the single cellblocks		N/A
	For batteries consisting of series-connected cells or cell blocks, nominal charge voltage not be counted as an overcharge protection		N/A
	For batteries consisting of series-connected cells or cell blocks, cells have closely matched capacities, be of the same design, be of the same chemistry and be from the same manufacturer		N/A
	It is recommended that the cells and cell blocks not discharged beyond the cell manufacturer's specified final voltage		N/A
	For batteries consisting of series-connected cells or cell blocks, cell balancing circuitry incorporated into the battery management system		N/A
5.6.3	Mechanical protection for cells and components of batteries		N/A
	Mechanical protection for cells, cell connections and control circuits within the battery provided to prevent damage as a result of intended use and reasonably foreseeable misuse		N/A
	The mechanical protection can be provided by the battery case or it can be provided by the end product enclosure for those batteries intended for building into an end product		N/A
	The battery case and compartments housing cells designed to accommodate cell dimensional tolerances during charging and discharging as recommended by the cell manufacturer		N/A
	For batteries intended for building into a portable end product, testing with the battery installed within the end product considered when conducting mechanical tests		N/A
<b>5.7</b>	<b>Quality plan</b>		N/A

IEC 62133-2			
Clause	Requirement + Test	Result - Remark	Verdict
	The manufacturer prepares and implements a quality plan that defines procedures for the inspection of materials, components, cells and batteries and which covers the whole process of producing each type of cell or battery		N/A
<b>5.8</b>	<b>Battery safety components</b>		N/A
	According annex F		N/A

<b>6</b>	<b>TYPE TEST AND SAMPLE SIZE</b>		P
	Tests are made with the number of cells or batteries specified in Table 1 using cells or batteries that are not more than six months old	Tests are performed according to specified in Table 1 of this standard. The samples are not more than six months old.	P
	Coin cells with resistance $\leq 3 \Omega$ (measured according annex D) are tested according table 1	Not coin cell.	N/A
	Unless otherwise specified, tests are carried out in an ambient temperature of $20 \text{ }^\circ\text{C} \pm 5 \text{ }^\circ\text{C}$		P
	The safety analysis of 5.6.1 identify those components of the protection circuit that are critical for short-circuit, overcharge and overdischarge protection		N/A
	When conducting the short-circuit test, consideration given to the simulation of any single fault condition that is likely to occur in the protecting circuit that would affect the short-circuit test		N/A

<b>7</b>	<b>SPECIFIC REQUIREMENTS AND TESTS</b>		P
<b>7.1</b>	<b>Charging procedure for test purposes</b>		P
7.1.1	First procedure		P
	This charging procedure applies to subclauses other than those specified in 7.1.2		P
	Unless otherwise stated in this document, the charging procedure for test purposes is carried out in an ambient temperature of $20 \text{ }^\circ\text{C} \pm 5 \text{ }^\circ\text{C}$ , using the method declared by the manufacturer		P
	Prior to charging, the battery have been discharged at $20 \text{ }^\circ\text{C} \pm 5 \text{ }^\circ\text{C}$ at a constant current of 0,2 It A down to a specified final voltage		P
7.1.2	Second procedure		P
	This charging procedure applies only to 7.3.1, 7.3.4, 7.3.5, and 7.3.9		P

IEC 62133-2			
Clause	Requirement + Test	Result - Remark	Verdict
	After stabilization for 1 h and 4 h, respectively, at ambient temperature of highest test temperature and lowest test temperature, as specified in Table 2, cells are charged by using the upper limit charging voltage and maximum charging current, until the charging current is reduced to 0,05 It A, using a constant voltage charging method	Charging temperature specified by client is 5-45°C, 45°C and 5°C were used as highest test temperature and lowest test temperature during tests. The upper limit charging voltage is 4.2V. The maximum charging current is 250mA.	P
<b>7.2</b>	<b>Intended use</b>		P
7.2.1	Continuous charging at constant voltage (cells)	Tested complied.	P
	Fully charged cells are subjected for 7 days to a charge using the charging method for current and standard voltage specified by the cell manufacturer		P
	Results: No fire. No explosion. No leakage..... :	(See appended table 7.2.1)	P
7.2.2	Case stress at high ambient temperature (battery)	Cell only.	N/A
	Oven temperature (°C)..... :		—
	Results: No physical distortion of the battery case resulting in exposure of internal protective components and cells		N/A
<b>7.3</b>	<b>Reasonably foreseeable misuse</b>		P
7.3.1	External short-circuit (cell)	Tested complied.	P
	The cells were tested until one of the following occurred:		P
	- 24 hours elapsed; or		N/A
	- The case temperature declined by 20 % of the maximum temperature rise		P
	Results: No fire. No explosion..... :	(See appended table 7.3.1)	P
7.3.2	External short-circuit (battery)	Cell only.	N/A
	The batteries were tested until one of the following occurred:		N/A
	- 24 hours elapsed; or		N/A
	- The case temperature declined by 20 % of the maximum temperature rise		N/A
	In case of rapid decline in short circuit current, the battery pack remained on test for an additional one hour after the current reached a low end steady state condition		N/A
	A single fault in the discharge protection circuit conducted on one to four (depending upon the protection circuit) of the five samples before conducting the short-circuit test		N/A

IEC 62133-2			
Clause	Requirement + Test	Result - Remark	Verdict
	A single fault applies to protective component parts such as MOSFET, fuse, thermostat or positive temperature coefficient (PTC) thermistor		N/A
	Results: No fire. No explosion..... :		N/A
7.3.3	Free fall	Tested complied.	P
	Results: No fire. No explosion		P
7.3.4	Thermal abuse (cells)	Tested complied.	P
	Oven temperature (°C)..... :	130	—
	Results: No fire. No explosion		P
7.3.5	Crush (cells)	Tested complied.	P
	The crushing force was released upon:		P
	- The maximum force of 13 kN ± 0,78 kN has been applied; or		P
	- An abrupt voltage drop of one-third of the original voltage has been obtained		N/A
	Results: No fire. No explosion..... :	(See appended table 7.3.5)	P
7.3.6	Over-charging of battery	Cell only.	N/A
	The supply voltage which is:		N/A
	- 1,4 times the upper limit charging voltage presented in Table A.1 (but not to exceed 6,0 V) for single cell/cell block batteries or		N/A
	- 1,2 times the upper limit charging voltage resented in Table A.1 per cell for series connected multi-cell batteries, and		N/A
	- Sufficient to maintain a current of 2,0 It A throughout the duration of the test or until the supply voltage is reached		N/A
	Test was continued until the temperature of the outer casing:		N/A
	- Reached steady state conditions (less than 10 °C change in 30-minute period); or		N/A
	- Returned to ambient		N/A
	Results: No fire. No explosion..... :		N/A
7.3.7	Forced discharge (cells)	Tested complied.	P
	If the discharge voltage reaches the negative value of upper limit charging voltage within the testing duration, the voltage is maintained at the negative value of the upper limit charging voltage by reducing the current for the remainder of the testing duration		N/A
	If the discharge voltage does not reach the negative value of upper limit charging voltage within the testing duration, the test is terminated at the end of the testing duration		P

IEC 62133-2			
Clause	Requirement + Test	Result - Remark	Verdict
	Results: No fire. No explosion..... :	(See appended table 7.3.7)	P
7.3.8	Mechanical tests (batteries)	Cell only.	N/A
7.3.8.1	Vibration		N/A
	Results: No fire, no explosion, no rupture, no leakage or venting..... :		N/A
7.3.8.2	Mechanical shock	Cell only.	N/A
	Results: No leakage, no venting, no rupture, no explosion and no fire..... :		N/A
7.3.9	Design evaluation – Forced internal short-circuit (cells)	Tested complied.	P
	The cells complied with national requirement for..... :	France, Japan, Republic of Korea, Switzerland	—
	The pressing was stopped upon:		P
	- A voltage drop of 50 mV has been detected; or		N/A
	- The pressing force of 800 N (cylindrical cells) or 400 N (prismatic cells) has been reached	400 N for prismatic cells.	P
	Results: No fire..... :	(See appended table 7.3.9)	P
<b>8</b>	<b>INFORMATION FOR SAFETY</b>		P
<b>8.1</b>	<b>General</b>		P
	Manufacturers of secondary cells ensure that information is provided about current, voltage and temperature limits of their products	Information for safety mentioned in manufacturer's specifications	P
	Manufacturers of batteries ensure that equipment manufacturers and, in the case of direct sales, end-users are provided with information to minimize and mitigate hazards		N/A
	Systems analyses performed by device manufacturers to ensure that a particular battery design prevents hazards from occurring during use of a product		N/A
	As appropriate, any information relating to hazard avoidance resulting from a system analysis provided to the end user		N/A
	Do not allow children to replace batteries without adult supervision		N/A
<b>8.2</b>	<b>Small cell and battery safety information</b>		P
	The following warning language is to be provided with the information packaged with the small cells and batteries or equipment using them:		P
	- Keep small cells and batteries which are considered swallowable out of the reach of children		P



IEC 62133-2			
Clause	Requirement + Test	Result - Remark	Verdict
	- Swallowing may lead to burns, perforation of soft tissue, and death. Severe burns can occur within 2 h of ingestion		P
	- In case of ingestion of a cell or battery, seek medical assistance promptly		P
<b>9</b>	<b>MARKING</b>		P
<b>9.1</b>	<b>Cell marking</b>		P
	Cells marked as specified in IEC 61960, except coin cells	The battery is marked in according with IEC 61960.	P
	Coin cells whose external surface area is too small to accommodate the markings on the cells show the designation and polarity		N/A
	By agreement between the cell manufacturer and the battery and/or end product manufacturer, component cells used in the manufacture of a battery need not be marked		N/A
<b>9.2</b>	<b>Battery marking</b>	Cell only.	N/A
	Batteries marked as specified in IEC 61960, except for coin batteries		N/A
	Coin batteries whose external surface area is too small to accommodate the markings on the batteries show the designation and polarity. Batteries also marked with an appropriate caution statement		N/A
	Terminals have clear polarity marking on the external surface of the battery		N/A
	Batteries with keyed external connectors designed for connection to specific end products need not be marked with polarity markings if the design of the external connector prevents reverse polarity connections		N/A
<b>9.3</b>	<b>Caution for ingestion of small cells and batteries</b>		P
	Coin cells and batteries identified as small batteries according to 8.2 include a caution statement regarding the hazards of ingestion in accordance with 8.2	Not coin cells and batteries.	N/A
	When small cells and batteries are intended for direct sale in consumer-replaceable applications, caution for ingestion given on the immediate package		P
<b>9.4</b>	<b>Other information</b>		P
	Storage and disposal instructions		P
	Recommended charging instructions		P

IEC 62133-2			
Clause	Requirement + Test	Result - Remark	Verdict
<b>10</b>	<b>PACKAGING AND TRANSPORT</b>		N/A
	Packaging for coin cells not small enough to fit within the limits of the ingestion gauge of Figure 3	Not coin cells	N/A
	The materials and packaging design are chosen so as to prevent the development of unintentional electrical conduction, corrosion of the terminals and ingress of environmental contaminants		N/A

<b>ANNEX A</b>	<b>CHARGING AND DISCHARGING RANGE OF SECONDARY LITHIUM ION CELLS FOR SAFE USE</b>		P
<b>A.1</b>	<b>General</b>		P
<b>A.2</b>	<b>Safety of lithium ion secondary battery</b>		P
<b>A.3</b>	<b>Consideration on charging voltage</b>		P
A.3.1	General		P
A.3.2	Upper limit charging voltage	Upper limit charging voltage of cell is 4.2V.	P
A.3.2.1	General		P
A.3.2.2	Explanation of safety viewpoint		N/A
A.3.2.3	Safety requirements, when different upper limit charging voltage is applied	4.2V applied.	N/A
<b>A.4</b>	<b>Consideration of temperature and charging current</b>		P
A.4.1	General		P
A.4.2	Recommended temperature range	Charging temperature range declared by client is 5-45°C	P
A.4.2.1	General		P
A.4.2.2	Safety consideration when a different recommended temperature range is applied		N/A
A.4.3	High temperature range	45°C applied.	N/A
A.4.3.1	General		N/A
A.4.3.2	Explanation of safety viewpoint		N/A
A.4.3.3	Safety considerations when specifying charging conditions in the high temperature range		N/A
A.4.3.4	Safety considerations when specifying a new upper limit in the high temperature range		N/A
A.4.4	Low temperature range	5°C applied	N/A
A.4.4.1	General		N/A
A.4.4.2	Explanation of safety viewpoint		N/A
A.4.4.3	Safety considerations, when specifying charging conditions in the low temperature range		N/A

IEC 62133-2			
Clause	Requirement + Test	Result - Remark	Verdict
A.4.4.4	Safety considerations when specifying a new lower limit in the low temperature range		N/A
A.4.5	Scope of the application of charging current		P
A.4.6	Consideration of discharge		P
A.4.6.1	General		P
A.4.6.2	Final discharge voltage and explanation of safety viewpoint		P
A.4.6.3	Discharge current and temperature range		P
A.4.6.4	Scope of application of the discharging current		P
<b>A.5</b>	<b>Sample preparation</b>		P
A.5.1	General		P
A.5.2	Insertion procedure for nickel particle to generate internal short		P
A.5.3	Disassembly of charged cell		P
A.5.4	Shape of nickel particle		P
A.5.5	Insertion of nickel particle in cylindrical cell		N/A
A.5.5.1	Insertion of nickel particle in winding core		N/A
A.5.5.2	Marking the position of the nickel particle on both ends of the winding core of the separator		N/A
A.5.6	Insertion of nickel particle in prismatic cell		P
<b>A.6</b>	<b>Experimental procedure of the forced internal short-circuit test</b>		P
A.6.1	Material and tools for preparation of nickel particle		P
A.6.2	Example of a nickel particle preparation procedure		P
A.6.3	Positioning (or placement) of a nickel particle		P
A.6.4	Damaged separator precaution		P
A.6.5	Caution for rewinding separator and electrode		P
A.6.6	Insulation film for preventing short-circuit		P
A.6.7	Caution when disassembling a cell		P
A.6.8	Protective equipment for safety		P
A.6.9	Caution in the case of fire during disassembling		P
A.6.10	Caution for the disassembling process and pressing the electrode core		P
A.6.11	Recommended specifications for the pressing device		P
<b>ANNEX B</b>	<b>RECOMMENDATIONS TO EQUIPMENT MANUFACTURERS AND BATTERY ASSEMBLERS</b>		P
<b>ANNEX C</b>	<b>RECOMMENDATIONS TO THE END-USERS</b>		P

IEC 62133-2			
Clause	Requirement + Test	Result - Remark	Verdict
<b>ANNEX D</b>	<b>MEASUREMENT OF THE INTERNAL AC RESISTANCE FOR COIN CELLS</b>		N/A
<b>D.1</b>	<b>General</b>		N/A
<b>D.2</b>	<b>Method</b>		N/A
	A sample size of three coin cells is required for this measurement.....:	(See appended table D.2)	N/A
	Coin cells with an internal resistance of less than or equal to 3 $\Omega$ are subjected to the testing according to Clause 6 and Table 1		N/A
	Coin cells with an internal resistance greater than 3 $\Omega$ require no further testing		N/A
<b>ANNEX E</b>	<b>PACKAGING AND TRANSPORT</b>		<b>N/A</b>
<b>ANNEX F</b>	<b>COMPONENT STANDARDS REFERENCES</b>		<b>N/A</b>



IEC 62133-2			
Clause	Requirement + Test	Result - Remark	Verdict

7.2.1	TABLE: Continuous charging at constant voltage (cells)				P
Sample no.	Recommended charging voltage Vc (Vdc)	Recommended charging current I <sub>rec</sub> (A)	OCV before test (Vdc)	Results	
C1#	4.20	0.125	4.167	P	
C2#	4.20	0.125	4.169	P	
C3#	4.20	0.125	4.165	P	
C4#	4.20	0.125	4.170	P	
C5#	4.20	0.125	4.169	P	
<b>Supplementary information:</b>					
- No fire or explosion					
- No leakage					
- The ambient temperature is 21.3°C					

7.3.1	TABLE: External short-circuit (cell)					P
Sample no.	Ambient T (°C)	OCV before test (Vdc)	Resistance of circuit (mΩ)	Maximum case temperature rise ΔT (K)	Results	
<b>Samples charged at charging temperature upper limit<sup>1)</sup></b>						
C6#	55.2	4.148	82.8	105.7	P	
C7#	55.2	4.152	83.4	106.3	P	
C8#	55.2	4.149	82.8	101.5	P	
C9#	55.2	4.150	83.1	108.4	P	
C10#	55.2	4.150	83.0	106.8	P	
C11#	54.9	4.081	83.2	107.3	P	
C12#	54.9	4.079	83.0	105.4	P	
C13#	54.9	4.081	82.7	103.5	P	
C14#	54.9	4.080	82.9	101.8	P	
C15#	54.9	4.077	83.1	100.5	P	
<b>Supplementary information:</b>						
- No fire or explosion						
1) Cells charged at 45°C						
2) Cells charged at 5°C						

IEC 62133-2						
Clause	Requirement + Test				Result - Remark	Verdict
<b>7.3.2</b>	<b>TABLE: External short-circuit (battery)</b>					<b>N/A</b>
Sample no.	Ambient T (°C)	OCV before test (Vdc)	Resistance of circuit (mΩ)	Maximum case temperature rise $\Delta T$ (K)	Component single fault condition	Results
<b>Supplementary information:</b>						

<b>7.3.5</b>	<b>TABLE: Crush (cells)</b>				<b>P</b>
Sample no.	OCV before test (Vdc)	OCV at removal of crushing force (Vdc)	Maximum force applied to the cell during crush (kN)	Results	
<b>Samples charged at charging temperature upper limit<sup>1)</sup></b>					
C29#	4.152	4.152	13.12	P	
C30#	4.145	4.144	13.08	P	
C31#	4.148	4.148	13.11	P	
C32#	4.145	4.145	13.07	P	
C33#	4.150	4.149	13.07	P	
<b>Samples charged at charging temperature lower limit<sup>2)</sup></b>					
C34#	4.072	4.072	13.05	P	
C35#	4.081	4.081	13.09	P	
C36#	4.078	4.078	13.13	P	
C37#	4.077	4.077	13.09	P	
C38#	4.082	4.081	13.07	P	
<b>Supplementary information:</b>					
- No fire or explosion					
1) Cells charged at 45°C					
2) Cells charged at 5°C					
- The ambient temperature is 21.3°C					

IEC 62133-2				
Clause	Requirement + Test	Result - Remark		Verdict
<b>7.3.6</b>	<b>TABLE: Over-charging of battery</b>			<b>N/A</b>
Constant charging current (A).....:				—
Supply voltage (Vdc).....:				—
Sample no.	OCV before charging (Vdc)	Total charging time (minute)	Maximum outer case temperature (°C)	Results
<b>Supplementary information:</b>				

<b>7.3.7</b>	<b>TABLE: Forced discharge (cells)</b>				<b>P</b>
Sample no.	OCV before application of reverse charge (Vdc)	Measured reverse charge $I_t$ (A)	Time for reversed charge, (minutes)	Results	
C39#	3.483	0.25	90	P	
C40#	3.495	0.25	90	P	
C41#	3.503	0.25	90	P	
C42#	3.488	0.25	90	P	
C43#	3.498	0.25	90	P	
<b>Supplementary information:</b>					
- No fire or explosion					
- The ambient temperature is 22.1°C					

<b>7.3.8.1</b>	<b>TABLE: Vibration</b>					<b>N/A</b>
Sample no.	OCV before test (Vdc)	OCV after test (Vdc)	Mass before test (g)	Mass after test (g)	Results	
<b>Supplementary information:</b>						



IEC 62133-2			
Clause	Requirement + Test	Result - Remark	Verdict

7.3.8.2	TABLE: Mechanical shock					N/A
Sample no.	OCV before test (Vdc)	OCV after test (Vdc)	Mass before test (g)	Mass after test (g)	Results	

**Supplementary information:**

7.3.9	TABLE: Forced internal short circuit (cells)					P
Sample no.	Chamber ambient T (°C)	OCV before test (Vdc)	Particle location <sup>1)</sup>	Maximum applied pressure (N)	Results	
<b>Samples charged at charging temperature upper limit<sup>2)</sup></b>						
C44#	45.0	4.148	1	407.3	P	
C45#	45.0	4.147	1	409.8	P	
C46#	45.0	4.153	1	411.3	P	
C47#	45.0	4.147	1	409.5	P	
C48#	45.0	4.151	1	412.4	P	
<b>Samples charged at charging temperature lower limit<sup>3)</sup></b>						
C49#	5.0	4.082	1	408.5	P	
C50#	5.0	4.085	1	409.8	P	
C51#	5.0	4.073	1	411.5	P	
C52#	5.0	4.074	1	412.8	P	
C53#	5.0	4.085	1	413.5	P	

**Supplementary information:**

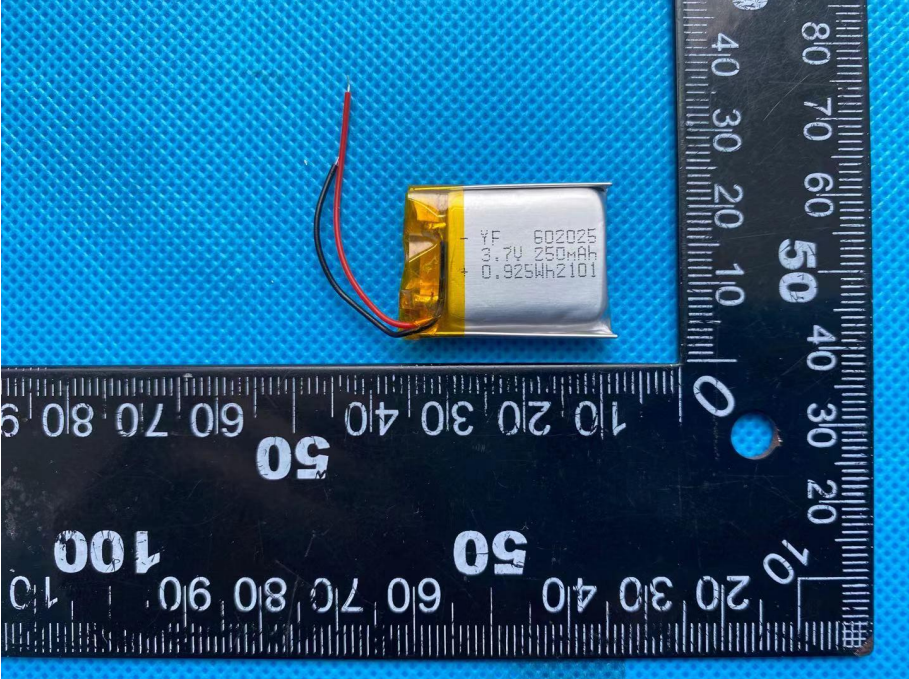
<sup>1)</sup> Identify one of the following:  
1: Nickel particle inserted between positive and negative (active material) coated area.  
2: Nickel particle inserted between positive aluminium foil and negative active material coated area.

<sup>2)</sup> Cells charged at 45°C  
<sup>3)</sup> Cells charged at 5°C

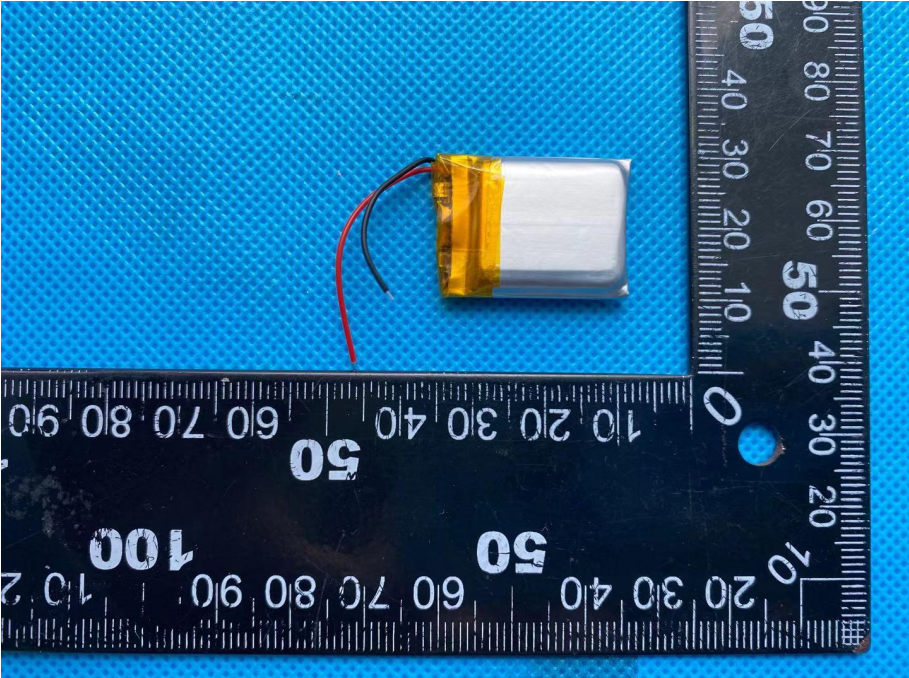
IEC 62133-2			
Clause	Requirement + Test	Result - Remark	Verdict

D.2	TABLE: Internal AC resistance for coin cells			N/A
Sample no.	Ambient T (°C)	Store time (h)	Resistance Rac ( $\Omega$ )	Results <sup>1)</sup>

**Supplementary information:**  
<sup>1)</sup> Coin cells with internal resistance less than or equal to 3  $\Omega$ , see test result on corresponding tables



Front view of cell



Back view of cell