
RoHS Test Report

Report No. : AGC05443211102-001

SAMPLE NAME : 18 LED desktop lamp with weather station

MODEL NAME : MO9737

APPLICANT : MID OCEAN BRANDS B.V

STANDARD(S) : Please refer to the following page(s).

DATE OF ISSUE : Nov.09, 2021

Attestation of Global Compliance (Shenzhen) Std & Tech Co., Ltd.



Any report having not been signed by authorized approver, or having been altered without authorization, or having not been stamped by the "Dedicated Testing/Inspection Stamp" is deemed to be invalid. Copying or excerpting portion of, or altering the content of the report is not permitted without the written authorization of AGC. The test results presented in the report apply only to the tested sample. Any objections to report issued by AGC should be submitted to AGC within 15days after the issuance of the test report. Further enquiry of validity or verification of the test report should be addressed to AGC by agc@agc-cert.com.

Attestation of Global Compliance(Shenzhen)Co., Ltd

Attestation of Global Compliance(Shenzhen)Std & Tech Co., Ltd

Tel: +86-755 2523 4088 E-mail: agc@agc-cert.com Web: <http://cn.agc-cert.com/>



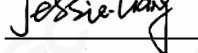
Applicant : MID OCEAN BRANDS B.V
Address : 7/F, Kings Tower, 111 King Lam Street, Cheung Sha Wan, Kowloon, Hong Kong.
Test Site : 6/F., Building 2, Sanwei Chaxi Industrial Park, Sanwei Community, Hangcheng Street, Bao'an District, Shenzhen, Guangdong, China

Report on the submitted sample(s) said to be:

Sample Name : 18 LED desktop lamp with weather station
Model : MO9737
Vendor code : 114628
Country of Origin : CHINA
Country of Destination : EUROPE
Sample Received Date : Nov.03, 2021
Testing Period : Nov.03, 2021 to Nov.09, 2021

Test Requested:

As specified by client, to determine the Pb, Cd, Hg, Cr⁶⁺, PBBs, PBDEs, DBP, BBP, DEHP, DIBP content in the submitted sample in accordance with Directive 2011/65/EU (RoHS) and its amendment directive (EU) 2015/863 on XRF and Chemical Method.

Conclusion**Pass**Approved by: 

Liangdan, Jessie.Liang

Technical Director

Any report having not been signed by authorized approver, or having been altered without authorization, or having not been stamped by the "Dedicated Testing/Inspection Stamp" is deemed to be invalid. Copying or excerpting portion of, or altering the content of the report is not permitted without the written authorization of AGC. The test results presented in the report apply only to the tested sample. Any objections to report issued by AGC should be submitted to AGC within 15 days after the issuance of the test report. Further enquiry of validity or verification of the test report should be addressed to AGC by agc@agc-cert.com.



Test Point Description

Test point	Test module	Test parts	Test point description
lamp			
1.	---	Shell	Milky white plastic lamp cover
2.	---		White plastic shell with silk screen
3.	---		Double faced adhesive tape
4.	---		White rubber plug
5.	---		Transparent label
6.	---		Metal weight block
7.	---		Black foam
8.	---	Rotating shaft	Metal shaft
9.	---		Metal washer
10.	---		Metal thread screw
11.	---		Metal ring
12.	---	---	Silver screw
13.	---	display	Polarizer
14.	---		Glass display
15.	---		Transparent tape
16.	---		Zebra tape
17.	---	Connecting line	Copper foil
18.	---		Tin solder
19.	---		Red wire jacket
20.	---		Wire core
21.	---	---	Metal sheet
22.	---	---	Grey ceramic
23.	---	---	Tin solder
24.	---	---	Red wire jacket
25.	---	---	Wire core
26.	---	inductance	Blue sleeving
27.	---		Black inductor
28.	---		Enameled wire
29.	---	---	Red enameled wire
30.	---	---	Blue enameled wire
31.	---	Lamp board	Chip LED
32.	---		PCB board
33.	---		Tin solder
34.	---	---	Transparent tape
35.	---	---	Metal shrapnel
36.	---	---	PCB board
37.	---	---	Tin solder
38.	---	---	Crystal oscillator
39.	---	---	Black thermistor
40.	---	Battery chip	Metal spring
41.	---		Metal sheet
42.	---	---	Chip capacitor
43.	---	---	Chip resistor

Any report having not been signed by authorized approver, or having been altered without authorization, or having not been stamped by the "Dedicated Testing/Inspection Stamp" is deemed to be invalid. Copying or excerpting portion of, or altering the content of the report is not permitted without the written authorization of AGC. The test results presented in the report apply only to the tested sample. Any objections to report issued by AGC should be submitted to AGC within 15 days after the issuance of the test report. Further enquiry of validity or verification of the test report should be addressed to AGC by agc@agc-cert.com.



Test point	Test module	Test parts	Test point description	
44.	Circuit board	---	Chip triode	
45.		---	Black round IC	
46.	Connecting plate	---	PCB board	
47.		---	Tin solder	
48.		---	Chip capacitor	
49.		---	Chip resistor	
50.		---	Chip triode	
51.		---	IC body	
52.		---	Tin plating	
53.		---	Hot melt adhesive	
54.		Micro connector	---	Micro metal connector
55.			---	Grey plastic joint
56.			---	Contact pin
57.		---	Battery	Brown tape
58.		---		Chip capacitor
59.		---		Chip resistor
60.	---	IC body		
61.	---	Tin plating		
62.	---	PCB board		
63.	---	Tin solder		
64.	---	Black wire jacket		
65.	---	Wire core		
66.	---	Red wire jacket		
(parts)				
67.	---	---	White double-sided adhesive	
68.	---	---	White plastic buckle	

Note: "---" = The test point exists alone in the sample and is not attached to the test module or test parts.

Test Result:

(Test Method/ Instrument/ MDL and Limit: See Appendix)

Test point	Test result (mg/kg)										Conclusion
	Pb	Cd	Hg	Cr ⁶⁺	PBBs	PBDEs	DIBP	DBP	BBP	DEHP	
1	N.D.	N.D.	N.D.	N.D.	N.D.	N.D.	N.D.*	N.D.*	N.D.*	N.D.*	Conformity
2	N.D.	N.D.	N.D.	N.D.	N.D.	N.D.	N.D.*	N.D.*	N.D.*	N.D.*	Conformity
3	N.D.	N.D.	N.D.	N.D.	N.D.	N.D.	N.D.*	N.D.*	N.D.*	N.D.*	Conformity
4	N.D.	N.D.	N.D.	N.D.	N.D.	N.D.	N.D.*	N.D.*	N.D.*	N.D.*	Conformity
5	N.D.	N.D.	N.D.	N.D.	N.D.	N.D.	N.D.*	N.D.*	N.D.*	N.D.*	Conformity
6	N.D.	N.D.	N.D.	330	N/A	N/A	N/A	N/A	N/A	N/A	Conformity
7	N.D.	N.D.	N.D.	N.D.	N.D.	N.D.	N.D.*	N.D.*	N.D.*	N.D.*	Conformity
8	N.D.	N.D.	N.D.	398	N/A	N/A	N/A	N/A	N/A	N/A	Conformity

Any report having not been signed by authorized approver, or having been altered without authorization, or having not been stamped by the "Dedicated Testing/Inspection Stamp" is deemed to be invalid. Copying or excerpting portion of, or altering the content of the report is not permitted without the written authorization of AGC. The test results presented in the report apply only to the tested sample. Any objections to report issued by AGC should be submitted to AGC within 15 days after the issuance of the test report. Further enquiry of validity or verification of the test report should be addressed to AGC by agc@agc-cert.com.



Test point	Test result (mg/kg)										Conclusion	
	Pb	Cd	Hg	Cr ⁶⁺	PBBs	PBDEs	DIBP	DBP	BBP	DEHP		
9	N.D.	N.D.	N.D.	N.D.*	N/A	N/A	N/A	N/A	N/A	N/A	N/A	Conformity
10	N.D.	N.D.	N.D.	N.D.	N/A	N/A	N/A	N/A	N/A	N/A	N/A	Conformity
11	N.D.	N.D.	N.D.	N.D.*	N/A	N/A	N/A	N/A	N/A	N/A	N/A	Conformity
12	N.D.	N.D.	N.D.	N.D.	N/A	N/A	N/A	N/A	N/A	N/A	N/A	Conformity
13	N.D.	N.D.	N.D.	N.D.	N.D.	N.D.	N.D.*	N.D.*	N.D.*	N.D.*	N.D.*	Conformity
14	N.D.	N.D.	N.D.	N.D.	N.D.	N.D.	N.D.*	N.D.*	N.D.*	N.D.*	N.D.*	Conformity
15	N.D.	N.D.	N.D.	N.D.	N.D.	N.D.	N.D.*	N.D.*	N.D.*	N.D.*	N.D.*	Conformity
16	N.D.	N.D.	N.D.	N.D.	N.D.	N.D.	N.D.*	N.D.*	N.D.*	N.D.*	N.D.*	Conformity
17	N.D.	N.D.	N.D.	N.D.	N/A	N/A	N/A	N/A	N/A	N/A	N/A	Conformity
18	N.D.	N.D.	N.D.	N.D.	N/A	N/A	N/A	N/A	N/A	N/A	N/A	Conformity
19	N.D.	N.D.	N.D.	N.D.	N.D.	N.D.	N.D.*	N.D.*	N.D.*	N.D.*	N.D.*	Conformity
20	N.D.	N.D.	N.D.	N.D.	N/A	N/A	N/A	N/A	N/A	N/A	N/A	Conformity
21	N.D.	N.D.	N.D.	N.D.	N/A	N/A	N/A	N/A	N/A	N/A	N/A	Conformity
22	952971	N.D.	N.D.	N.D.	N.D.	N.D.	N.D.*	N.D.*	N.D.*	N.D.*	N.D.*	Conformity
23	251	N.D.	N.D.	N.D.	N/A	N/A	N/A	N/A	N/A	N/A	N/A	Conformity
24	N.D.	N.D.	N.D.	N.D.	N.D.	N.D.	N.D.*	N.D.*	N.D.*	N.D.*	N.D.*	Conformity
25	N.D.	N.D.	N.D.	N.D.	N/A	N/A	N/A	N/A	N/A	N/A	N/A	Conformity
26	N.D.	N.D.	N.D.	N.D.	N.D.	N.D.	N.D.*	N.D.*	N.D.*	N.D.*	N.D.*	Conformity
27	N.D.	N.D.	N.D.	N.D.	N.D.	N.D.	N.D.*	N.D.*	N.D.*	N.D.*	N.D.*	Conformity
28	N.D.	N.D.	N.D.	N.D.	N.D.	N.D.	N.D.*	N.D.*	N.D.*	N.D.*	N.D.*	Conformity
29	N.D.	N.D.	N.D.	N.D.	N.D.	N.D.	N.D.*	N.D.*	N.D.*	N.D.*	N.D.*	Conformity
30	N.D.	N.D.	N.D.	N.D.	N.D.	N.D.	N.D.*	N.D.*	N.D.*	N.D.*	N.D.*	Conformity
31	N.D.	N.D.	N.D.	N.D.	N.D.	N.D.	N.D.*	N.D.*	N.D.*	N.D.*	N.D.*	Conformity
32	N.D.	N.D.	N.D.	N.D.	N.D.	N.D.	N.D.*	N.D.*	N.D.*	N.D.*	N.D.*	Conformity
33	N.D.	N.D.	N.D.	N.D.	N/A	N/A	N/A	N/A	N/A	N/A	N/A	Conformity
34	N.D.	N.D.	N.D.	N.D.	N.D.	N.D.	N.D.*	N.D.*	N.D.*	N.D.*	N.D.*	Conformity
35	N.D.	N.D.	N.D.	N.D.*	N/A	N/A	N/A	N/A	N/A	N/A	N/A	Conformity
36	N.D.	N.D.	N.D.	N.D.	N.D.*	N.D.*	N.D.*	N.D.*	N.D.*	N.D.*	N.D.*	Conformity
37	N.D.	N.D.	N.D.	N.D.	N/A	N/A	N/A	N/A	N/A	N/A	N/A	Conformity

Any report having not been signed by authorized approver, or having been altered without authorization, or having not been stamped by the "Dedicated Testing/Inspection Stamp" is deemed to be invalid. Copying or excerpting portion of, or altering the content of the report is not permitted without the written authorization of AGC. The test results presented in the report apply only to the tested sample. Any objections to report issued by AGC should be submitted to AGC within 15 days after the issuance of the test report. Further enquiry of validity or verification of the test report should be addressed to AGC by agc@agc-cert.com.



Test point	Test result (mg/kg)										Conclusion
	Pb	Cd	Hg	Cr ⁶⁺	PBBs	PBDEs	DIBP	DBP	BBP	DEHP	
38	N.D.	N.D.	N.D.	N.D.	N.D.	N.D.	N.D.*	N.D.*	N.D.*	N.D.*	Conformity
39	N.D.	N.D.	N.D.	N.D.	N.D.	N.D.	N.D.*	N.D.*	N.D.*	N.D.*	Conformity
40	N.D.	N.D.	N.D.	N.D.	N/A	N/A	N/A	N/A	N/A	N/A	Conformity
41	N.D.	N.D.	N.D.	N.D.	N/A	N/A	N/A	N/A	N/A	N/A	Conformity
42	N.D.	N.D.	N.D.	N.D.	N.D.	N.D.	N.D.*	N.D.*	N.D.*	N.D.*	Conformity
43	N.D.	N.D.	N.D.	N.D.	N.D.	N.D.	N.D.*	N.D.*	N.D.*	N.D.*	Conformity
44	N.D.	N.D.	N.D.	N.D.	N.D.	N.D.	N.D.*	N.D.*	N.D.*	N.D.*	Conformity
45	N.D.	N.D.	N.D.	N.D.	N.D.	N.D.	N.D.*	N.D.*	N.D.*	N.D.*	Conformity
46	N.D.	N.D.	N.D.	N.D.	N.D.*	N.D.*	N.D.*	N.D.*	N.D.*	N.D.*	Conformity
47	N.D.	N.D.	N.D.	N.D.	N/A	N/A	N/A	N/A	N/A	N/A	Conformity
48	N.D.	N.D.	N.D.	N.D.	N.D.	N.D.	N.D.*	N.D.*	N.D.*	N.D.*	Conformity
49	N.D.	N.D.	N.D.	N.D.	N.D.	N.D.	N.D.*	N.D.*	N.D.*	N.D.*	Conformity
50	N.D.	N.D.	N.D.	462	N.D.	N.D.	N.D.*	N.D.*	N.D.*	N.D.*	Conformity
51	N.D.	N.D.	N.D.	N.D.	N.D.	N.D.	N.D.*	N.D.*	N.D.*	N.D.*	Conformity
52	N.D.	N.D.	N.D.	N.D.	N/A	N/A	N/A	N/A	N/A	N/A	Conformity
53	N.D.	N.D.	N.D.	N.D.	N.D.	N.D.	N.D.*	N.D.*	N.D.*	N.D.*	Conformity
54	N.D.	N.D.	N.D.	N.D.	N/A	N/A	N/A	N/A	N/A	N/A	Conformity
55	N.D.	N.D.	N.D.	N.D.	N.D.	N.D.	N.D.*	N.D.*	N.D.*	N.D.*	Conformity
56	N.D.	N.D.	N.D.	N.D.	N/A	N/A	N/A	N/A	N/A	N/A	Conformity
57	N.D.	N.D.	N.D.	N.D.	N.D.	N.D.	N.D.*	N.D.*	N.D.*	N.D.*	Conformity
58	N.D.	N.D.	N.D.	N.D.	N.D.	N.D.	N.D.*	N.D.*	N.D.*	N.D.*	Conformity
59	N.D.	N.D.	N.D.	N.D.	N.D.	N.D.	N.D.*	N.D.*	N.D.*	N.D.*	Conformity
60	N.D.	N.D.	N.D.	N.D.	N.D.	N.D.	N.D.*	N.D.*	N.D.*	N.D.*	Conformity
61	N.D.	N.D.	N.D.	N.D.	N/A	N/A	N/A	N/A	N/A	N/A	Conformity
62	N.D.	N.D.	N.D.	N.D.	N.D.*	N.D.*	N.D.*	N.D.*	N.D.*	N.D.*	Conformity
63	N.D.	N.D.	N.D.	N.D.	N/A	N/A	N/A	N/A	N/A	N/A	Conformity
64	N.D.	N.D.	N.D.	N.D.	N.D.	N.D.	N.D.*	258*	N.D.*	N.D.*	Conformity
65	N.D.	N.D.	N.D.	N.D.	N/A	N/A	N/A	N/A	N/A	N/A	Conformity
66	N.D.	N.D.	N.D.	N.D.	N.D.	N.D.	N.D.*	289*	N.D.*	N.D.*	Conformity

Any report having not been signed by authorized approver, or having been altered without authorization, or having not been stamped by the "Dedicated Testing/Inspection Stamp" is deemed to be invalid. Copying or excerpting portion of, or altering the content of the report is not permitted without the written authorization of AGC. The test results presented in the report apply only to the tested sample. Any objections to report issued by AGC should be submitted to AGC within 15 days after the issuance of the test report. Further enquiry of validity or verification of the test report should be addressed to AGC by agc@agc-cert.com.



Test point	Test result (mg/kg)										Conclusion
	Pb	Cd	Hg	Cr ⁶⁺	PBBs	PBDEs	DIBP	DBP	BBP	DEHP	
67	N.D.	N.D.	N.D.	N.D.	N.D.	N.D.	N.D.*	N.D.*	N.D.*	N.D.*	Conformity
68	N.D.	N.D.	N.D.	N.D.	N.D.	N.D.	N.D.*	N.D.*	N.D.*	N.D.*	Conformity

Note:

mg/kg = milligram per kilogram

 $\mu\text{g}/\text{cm}^2$ = microgram per square centimeter

MDL = Method Detection Limit

N.D.=Not Detected (less than method detection limit)

N/A= Not applicable

Exemption

Test point	Exemption clause	Content
22	7(c)-I	Electrical and electronic components containing lead in a glass or ceramic other than dielectric ceramic in capacitors, e.g. piezoelectronic devices, or in a glass or ceramic matrix compound

Remark:

- *denotes as reported result(s) was (were) performed by wet chemistry method. Others were screened by XRF. For XRF screening, the result(s) of Cr VI was (were) reported as total chromium and the result(s) of PBBs and PBDEs was (were) reported as total bromine. Also, the XRF result(s) may be different to the actual content based on various factors including, but not limit to, sample size, thickness, area, nonuniformity composition, surface flatness.
- This XRF Scanning report is for reference purposes only. The applicant shall make its/his/her own judgment as to whether the information provided in this XRF screening report is sufficient for its/his/her purposes.

The result shown in this XRF scanning report will differ based on various factors, including but not limited to, the sample size, thickness, area, surface flatness, equipment parameters and matrix effect (e.g. plastic, rubber, metal, glass, ceramic etc.). Further wet chemical pre-treatment with relevant chemical equipment analysis are required to obtain quantitative data.

Any report having not been signed by authorized approver, or having been altered without authorization, or having not been stamped by the "Dedicated Testing/Inspection Stamp" is deemed to be invalid. Copying or excerpting portion of, or altering the content of the report is not permitted without the written authorization of AGC. The test results presented in the report apply only to the tested sample. Any objections to report issued by AGC should be submitted to AGC within 15days after the issuance of the test report. Further enquiry of validity or verification of the test report should be addressed to AGC by agc@agc-cert.com.

Attestation of Global Compliance(Shenzhen)Co., Ltd

Attestation of Global Compliance(Shenzhen)Std & Tech Co., Ltd

Tel: +86-755 2523 4088 E-mail: agc@agc-cert.com Web: http://cn.agc-cert.com/



- Boiling-water-extraction:

Number	Colorimetric result (Cr(VI) concentration)	Qualitative result
1	The sample solution is < the 0,10 $\mu\text{g}/\text{cm}^2$ equivalent comparison standard solution	The sample is negative for Cr(VI) – The Cr(VI) concentration is below the limit of quantification. The coating is considered a non-Cr(VI) based coating.
2	The sample solution is \geq the 0,10 $\mu\text{g}/\text{cm}^2$ and \leq the 0,13 $\mu\text{g}/\text{cm}^2$ equivalent comparison standard solutions	The result is considered to be inconclusive – Unavoidable coating variations may influence the determination.
3	The sample solution is > the 0,13 $\mu\text{g}/\text{cm}^2$ equivalent comparison standard solution	The sample is positive for Cr(VI) – The Cr(VI) concentration is above the limit of quantification and the statistical margin of error. The sample coating is considered to contain Cr(VI).

- Negative indicates the absence of Cr(VI) on the tested areas concentration is below the limit of quantification.

The coating is considered a non-Cr(VI) based coating.

Uncertainty indicates the absence of Cr(VI) on the tested areas unavoidable coating variations may influence the determination.

Positive indicates the presence of Cr(VI) on the tested areas concentration is above the limit of quantification and the statistical margin of error. The sample coating is considered to contain Cr(VI). Storage conditions and production date of the tested sample are unavailable and thus result of Cr(VI) represent status of the sample at the time of testing.

Any report having not been signed by authorized approver, or having been altered without authorization, or having not been stamped by the "Dedicated Testing/Inspection Stamp" is deemed to be invalid. Copying or excerpting portion of, or altering the content of the report is not permitted without the written authorization of AGC. The test results presented in the report apply only to the tested sample. Any objections to report issued by AGC should be submitted to AGC within 15 days after the issuance of the test report. Further enquiry of validity or verification of the test report should be addressed to AGC by agc@agc-cert.com.

Attestation of Global Compliance(Shenzhen)Co., Ltd

Attestation of Global Compliance(Shenzhen)Std & Tech Co., Ltd

Tel: +86-755 2523 4088 E-mail: agc@agc-cert.com Web: <http://cn.agc-cert.com/>



Appendix:

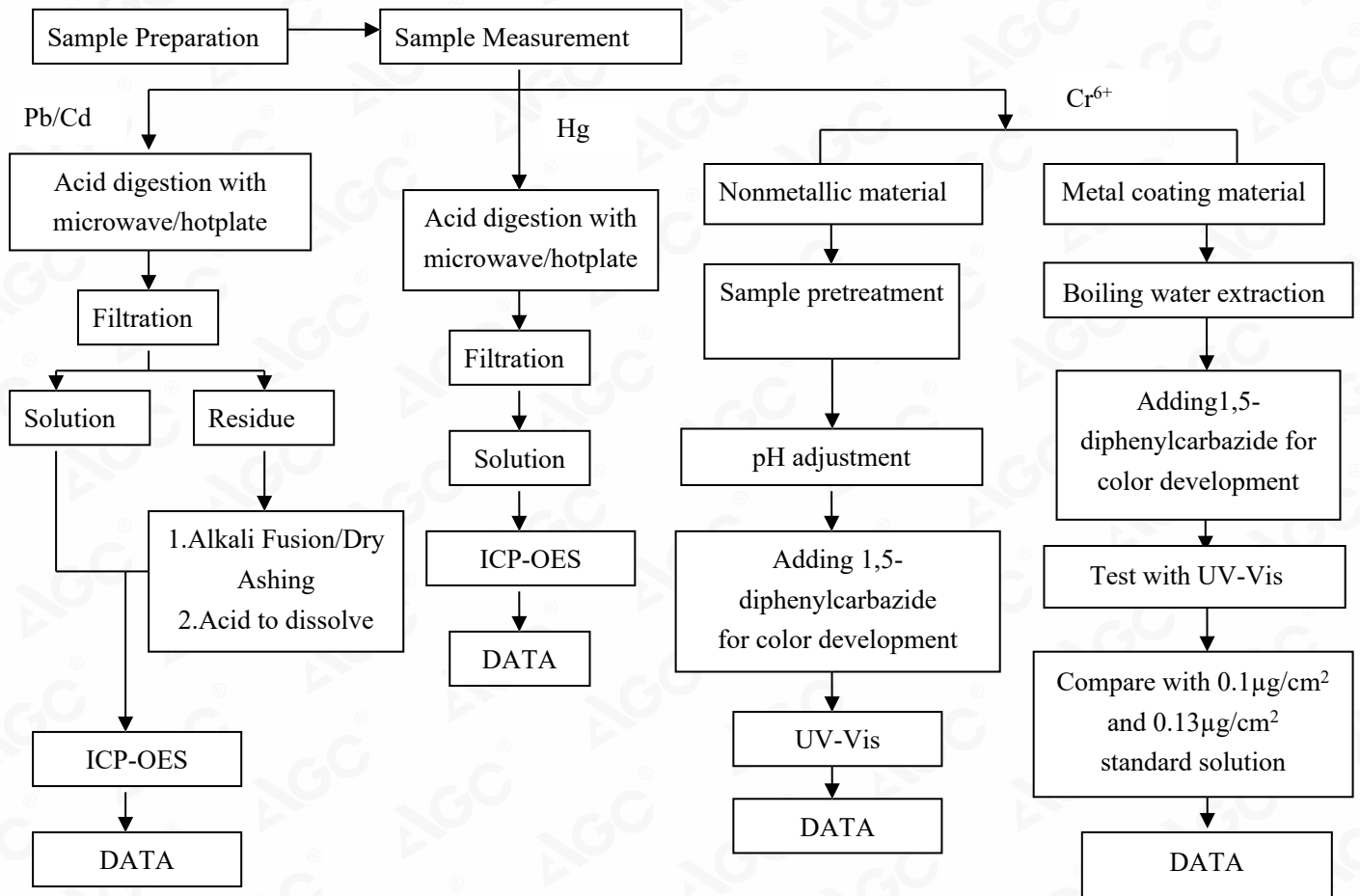
Test Item	Test Method/ Instrument	MDL	Maximum Limit
X-ray Fluorescence Spectrometry(XRF)			
Lead (Pb)	IEC 62321-3-1:2013 / XRF	200mg/kg	1000mg/kg
Cadmium (Cd)		50mg/kg	100mg/kg
Mercury (Hg)		200mg/kg	1000mg/kg
Total Chromium		200mg/kg	/
Total Bromine		200mg/kg	/
Wet Chemistry Method			
Lead (Pb)	IEC 62321-5:2013/ICP-OES	10mg/kg	1000mg/kg
Cadmium (Cd)	IEC 62321-5:2013/ ICP-OES	10mg/kg	100mg/kg
Mercury (Hg)	IEC 62321-4: 2013+A1:2017/ ICP-OES	10mg/kg	1000mg/kg
Non-metal Hexavalent Chromium (Cr ⁶⁺)	IEC 62321-7-2:2017/ UV-Vis	8mg/kg	1000mg/kg
Metal Hexavalent Chromium (Cr ⁶⁺)	IEC 62321-7-1:2015/ UV-Vis	0.1µg/cm ²	/
Polybrominated Biphenyls (PBBs) -Monobromobiphenyl (MonoBB) -Dibromobiphenyl (DiBB) -Tribromobiphenyl (TriBB) -Tetrabromobiphenyl (TetraBB) -Pentabromobiphenyl (PentaBB) -Hexabromobiphenyl (HexaBB) -Heptabromobiphenyl (HeptaBB) -Octabromobiphenyl (OctaBB) -Nonabromodiphenyl (NonaBB) -Decabromodiphenyl (DecaBB)	IEC 62321-6:2015/ GC-MS	Single 5mg/kg	Sum 1000mg/kg
Polybrominated Diphenylethers (PBDEs) -Monobromodiphenyl ether (MonoBDE) -Dibromodiphenyl ether (DiBDE) -Tribromodiphenyl ether (TriBDE) -Tetrabromodiphenyl ether (TetraBDE) -Pentabromodiphenyl ether (PentaBDE) -Hexabromodiphenyl ether (HexaBDE) -Heptabromodiphenyl ether (HeptaBDE) -Octabromodiphenyl ether (OctaBDE) -Nonabromodiphenyl ether (NonaBDE) -Decabromodiphenyl ether (DecaBDE)	IEC 62321-6:2015/ GC-MS	Single 5mg/kg	Sum 1000mg/kg
Di-iso-butyl phthalate (DIBP)	IEC 62321-8:2017/ GC-MS	50mg/kg	1000mg/kg
Dibutyl phthalate (DBP)		50mg/kg	1000mg/kg
Butylbenzyl phthalate (BBP)		50mg/kg	1000mg/kg
Di-(2-ethylhexyl) Phthalate (DEHP)		50mg/kg	1000mg/kg

Any report having not been signed by authorized approver, or having been altered without authorization, or having not been stamped by the "Dedicated Testing/Inspection Stamp" is deemed to be invalid. Copying or excerpting portion of, or altering the content of the report is not permitted without the written authorization of AGC. The test results presented in the report apply only to the tested sample. Any objections to report issued by AGC should be submitted to AGC within 15 days after the issuance of the test report. Further enquiry of validity or verification of the test report should be addressed to AGC by agc@agc-cert.com.



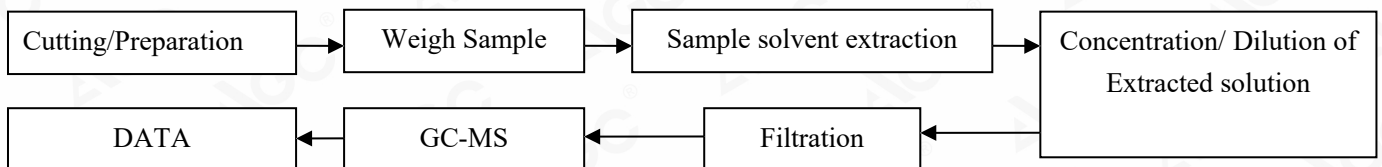
Test Flow Chart

1. For Pb, Cd, Hg, Cr⁶⁺



These sample were dissolved totally by pre-conditioning method according to above flow chart (Cr⁶⁺ test method excluded)

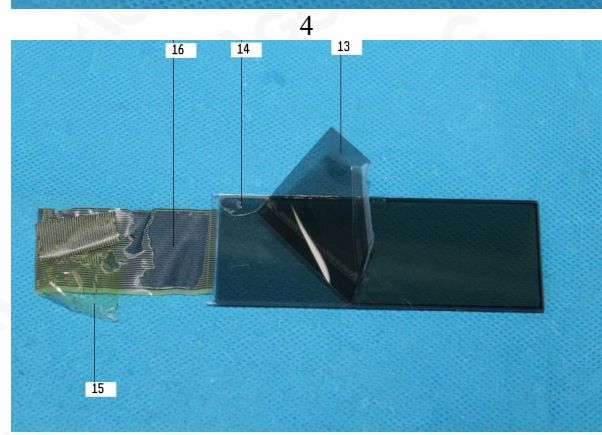
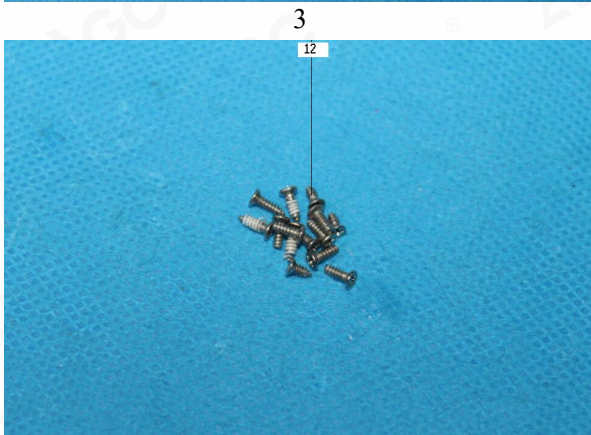
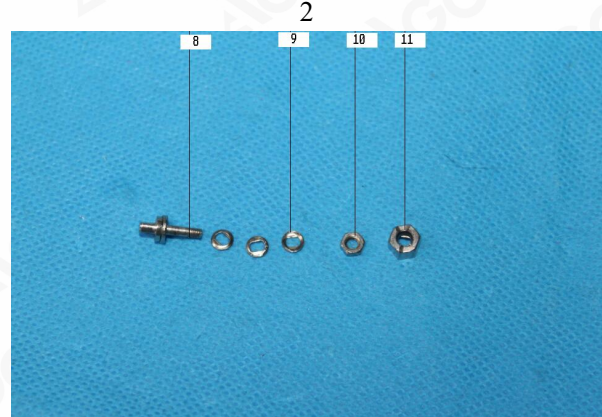
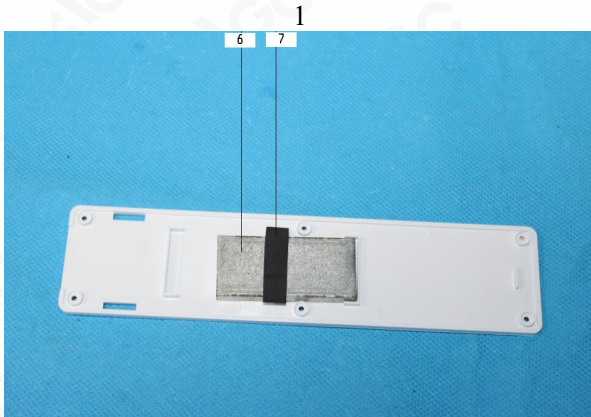
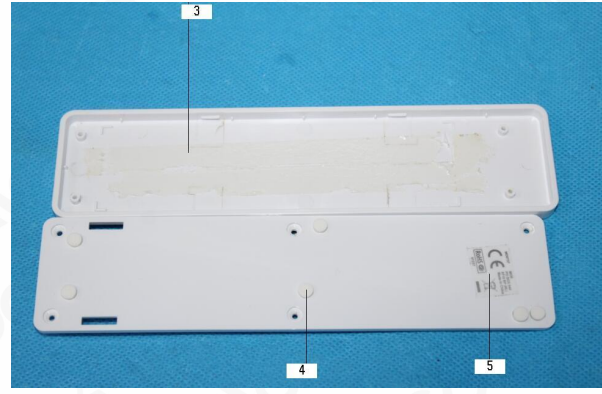
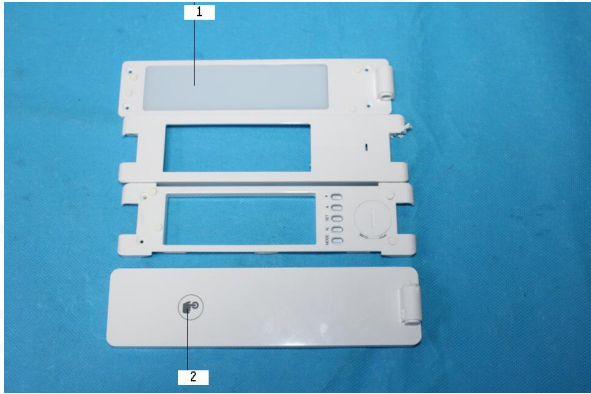
2. For PBBs, PBDEs, DBP, BBP, DEHP, DIBP



Any report having not been signed by authorized approver, or having been altered without authorization, or having not been stamped by the "Dedicated Testing/Inspection Stamp" is deemed to be invalid. Copying or excerpting portion of, or altering the content of the report is not permitted without the written authorization of AGC. The test results presented in the report apply only to the tested sample. Any objections to report issued by AGC should be submitted to AGC within 15 days after the issuance of the test report. Further enquiry of validity or verification of the test report should be addressed to AGC by agc@agc-cert.com.

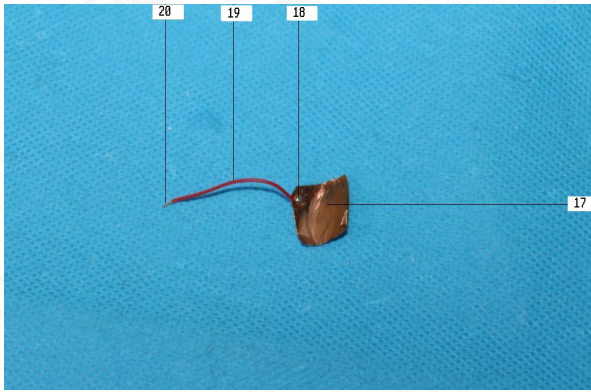


The photo of the sample

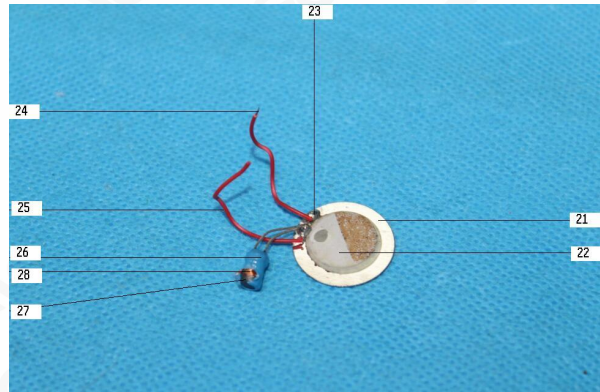


Any report having not been signed by authorized approver, or having been altered without authorization, or having not been stamped by the "Dedicated Testing/Inspection Stamp" is deemed to be invalid. Copying or excerpting portion of, or altering the content of the report is not permitted without the written authorization of AGC. The test results presented in the report apply only to the tested sample. Any objections to report issued by AGC should be submitted to AGC within 15days after the issuance of the test report. Further enquiry of validity or verification of the test report should be addressed to AGC by agc@agc-cert.com.

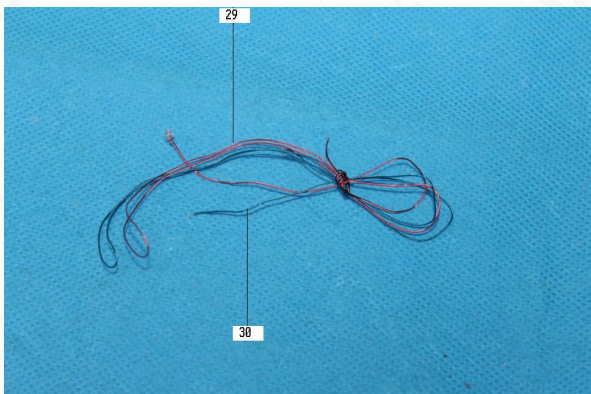




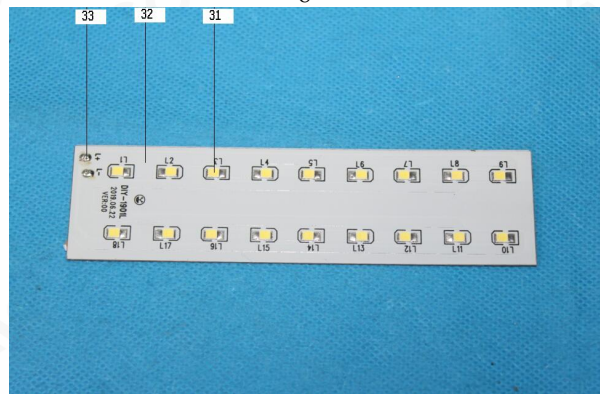
7



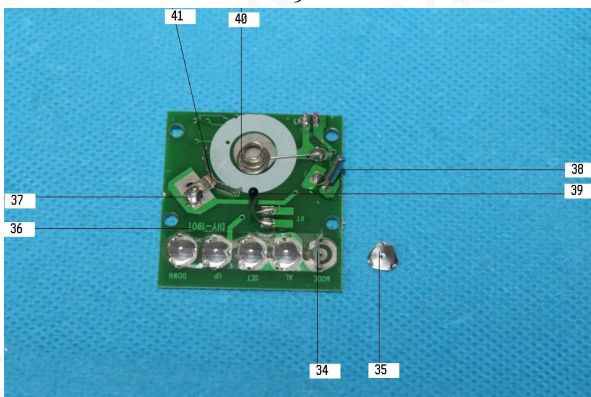
8



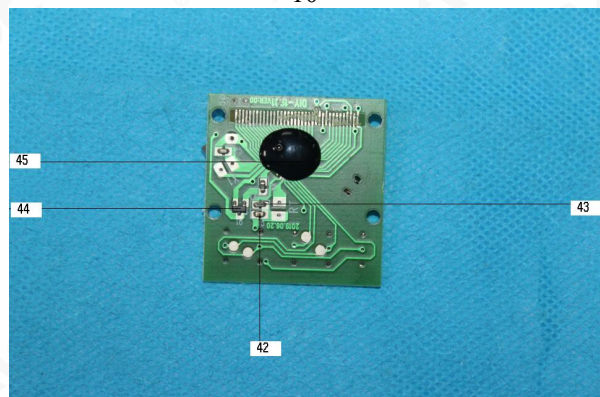
9



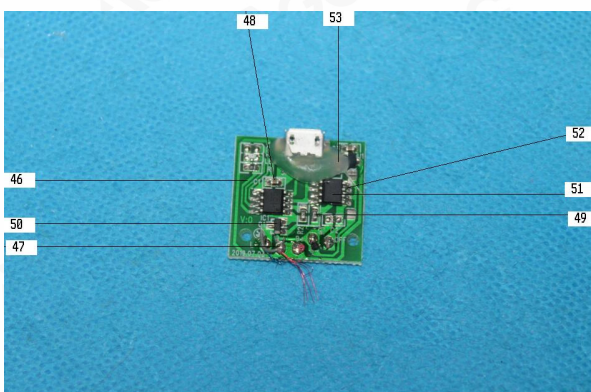
10



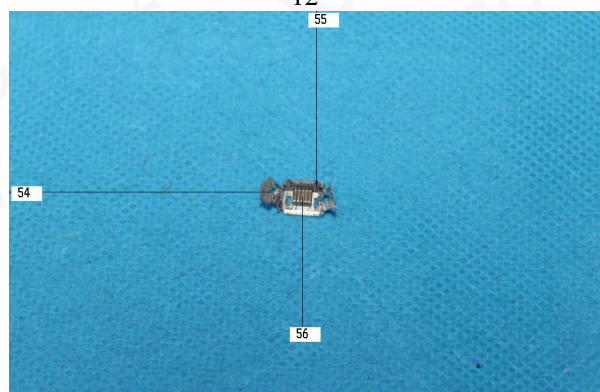
11



12



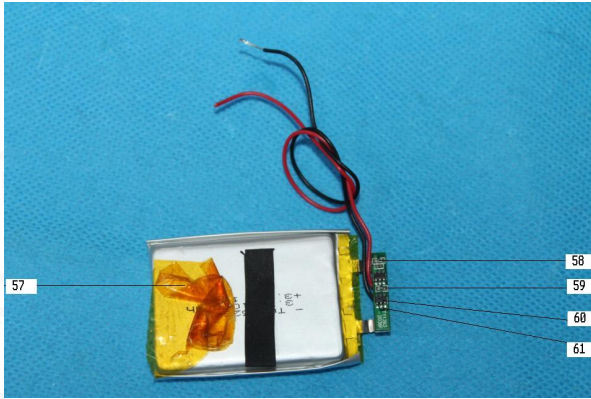
13



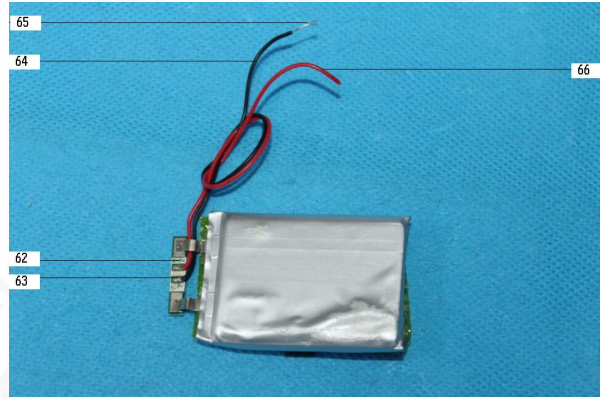
14

Any report having not been signed by authorized approver, or having been altered without authorization, or having not been stamped by the "Dedicated Testing/Inspection Stamp" is deemed to be invalid. Copying or excerpting portion of, or altering the content of the report is not permitted without the written authorization of AGC. The test results presented in the report apply only to the tested sample. Any objections to report issued by AGC should be submitted to AGC within 15 days after the issuance of the test report. Further enquiry of validity or verification of the test report should be addressed to AGC by agc@agc-cert.com.





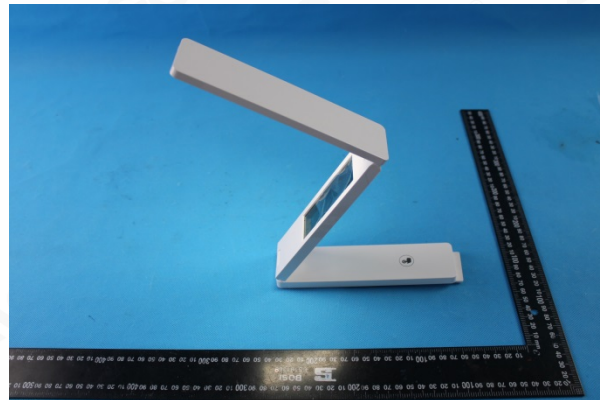
15



16



17



AGC05443211102-001

AGC authenticate the photo only on original report

*** End of Report ***

Any report having not been signed by authorized approver, or having been altered without authorization, or having not been stamped by the "Dedicated Testing/Inspection Stamp" is deemed to be invalid. Copying or excerpting portion of, or altering the content of the report is not permitted without the written authorization of AGC. The test results presented in the report apply only to the tested sample. Any objections to report issued by AGC should be submitted to AGC within 15 days after the issuance of the test report. Further enquiry of validity or verification of the test report should be addressed to AGC by agc@agc-cert.com.

Attestation of Global Compliance(Shenzhen)Co., Ltd
Attestation of Global Compliance(Shenzhen)Std & Tech Co., Ltd
Tel: +86-755 2523 4088 E-mail: agc@agc-cert.com Web: <http://cn.agc-cert.com/>





Conditions of Issuance of Test Reports

1. All samples and goods are accepted by the Attestation of Global Compliance (Shenzhen) Std & Tech Co., Ltd. (the “Company”) solely for testing and reporting in accordance with the following terms and conditions. The company provides its services on the basis that such terms and conditions constitute express agreement between the company and any person, firm or company requesting its services (the “Clients”).
2. Any report issued by Company as a result of this application for testing services (the “Report”) shall be issued in confidence to the Clients and the Report will be strictly treated as such by the Company. It may not be reproduced either in its entirety or in part and it may not be used for advertising or other unauthorized purposes without the written consent of the Company. The Clients to whom the Report is issued may, however, show or send it, or a certified copy thereof prepared by the Company to its customer, supplier or other persons directly concerned. The Company will not, without the consent of the Clients, enter into any discussion or correspondence with any third party concerning the contents of the Report, unless required by the relevant governmental authorities, laws or court orders.
3. The Company shall not be called or be liable to be called to give evidence or testimony on the Report in a court of law without its prior written consent, unless required by the relevant governmental authorities, laws or court orders.
4. In the event of the improper use of the report as determined by the Company, the Company reserves the right to withdraw it, and to adopt any other additional remedies which may be appropriate.
5. Samples submitted for testing are accepted on the understanding that the Report issued cannot form the basis of, or be the instrument for, any legal action against the Company.
6. The Company will not be liable for or accept responsibility for any loss or damage however arising from the use of information contained in any of its Reports or in any communication whatsoever about its said tests or investigations.
7. Clients wishing to use the Report in court proceedings or arbitration shall inform the Company to that effect prior to submitting the sample for testing.
8. The Company is not responsible for recalling the electronic version of the original report when any revision is made to them. The Client assumes the responsibility to providing the revised version to any interested party who uses them.
9. Subject to the variable length of retention time for test data and report stored hereinto as otherwise specifically required by individual accreditation authorities, the Company will only keep the supporting test data and information of the test report for a period of six years. The data and information will be disposed of after the aforementioned retention period has elapsed. Under no circumstances shall we provide any data and information which has been disposed of after retention period. Under no circumstances shall we be liable for damage of any kind, including (but not limited to) compensatory damages, lost profits, lost data, or any form of special, incidental, indirect, consequential or punitive damages of any kind, whether based on breach of contract of warranty, tort (including negligence), product liability or otherwise, even if we are informed in advance of the possibility of such damages.

Any report having not been signed by authorized approver, or having been altered without authorization, or having not been stamped by the “Dedicated Testing/Inspection Stamp” is deemed to be invalid. Copying or excerpting portion of, or altering the content of the report is not permitted without the written authorization of AGC. The test results presented in the report apply only to the tested sample. Any objections to report issued by AGC should be submitted to AGC within 15 days after the issuance of the test report. Further enquiry of validity or verification of the test report should be addressed to AGC by agc@agc-cert.com.





TEST REPORT

Report No.: LCS210415091AR

Date: 2021.04.28

Page 1 of 9

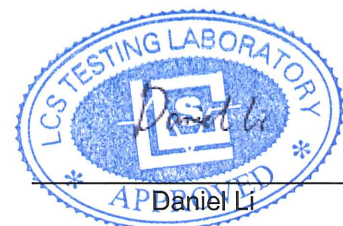
Applicant : Mid Ocean Brands B.V.
Address : 7/F., Kings Tower,111 King Lam Street, Cheung Sha Wan, Kowloon, Hong Kong
Manufacturer : 114628
Address : /

Report on the submitted samples said to be:

Sample Name : USB CABLE
Trade Mark : N/A
Style No. : MO5001/MO8602/MO8412/MO8113/MO9662/MO9663/MO9051/MO8839/MO8735/
MO9075/MO8573/MO8572/MO8884/MO8886/MO8642/MO8827/MO9310/MO9309/
MO9434/MO9698/MO9446/MO9914/MO9692/MO9842/MO9997/MO9996/MO9737
Testing Period : March 24, 2021 ~ April 02, 2021
Results : Please refer to next page(s).

TEST REQUEST	CONCLUSION
According to the customer's request, based on the performed tests on submitted sample, the result of Lead(Pb), Cadmium(Cd), Mercury(Hg), Hexavalent Chromium(Cr(VI)), PBBs, PBDEs, Dibutyl Phthalate(DBP), Benzylbutyl Phthalate(BBP), Bis(2-ethylhexyl) Phthalate(DEHP), Diisobutyl phthalate(DIBP) content comply with the limit requirement as set of RoHS Directive (EU) 2015/863 amending Annex II to Directive 2011/65/EU.	Pass

Signed for and on behalf of LCS





TEST REPORT

Report No.: LCS210415091AR

Date: 2021.04.28

Page 2 of 9

Results:

A. EU RoHS Directive 2011/65/EU and its amendment directives on XRF

Test method: With reference to IEC 62321-3-1:2013, Screening by X-ray Fluorescence Spectroscopy (XRF)

Seq. No.	Tested Part(s)	Results						Date of sample submission/resubmission
		Cd	Pb	Hg	Cr ^v	Br ^v		
						PBBs	PBDEs	
1	White plastic sheet	BL	BL	BL	BL	BL	BL	2021-04-16
2	Silver metal sheet	BL	OL	BL	BL	/	/	2021-04-16
3	White plastic sheet	BL	BL	BL	BL	BL	BL	2021-04-16
4	Silver metal needle	BL	OL	BL	BL	/	/	2021-04-16
5	Solder	BL	BL	BL	BL	/	/	2021-04-16
6	White plastic wire sheath	BL	BL	BL	BL	BL	BL	2021-04-16
7	White plastic thread	BL	BL	BL	BL	BL	BL	2021-04-16
8	Red plastic thread	BL	BL	BL	BL	BL	BL	2021-04-16
9	Red metal wire	BL	OL	BL	BL	/	/	2021-04-16
10	White plastic sheet	BL	BL	BL	BL	BL	BL	2021-04-16
11	Black plastic sheet	BL	BL	BL	BL	BL	BL	2021-04-16
12	Silver metal sheet	BL	OL	BL	X	/	/	2021-04-16
13	Silver metal needle	BL	OL	BL	BL	/	/	2021-04-16
14	Solder	BL	BL	BL	BL	/	/	2021-04-16
15	Black plastic sheet	BL	BL	BL	BL	BL	BL	2021-04-16
16	Black plastic wire	BL	BL	BL	BL	BL	BL	2021-04-16
17	Black plastic sheet	BL	BL	BL	BL	BL	BL	2021-04-16



TEST REPORT

Report No.: LCS210415091AR

Date: 2021.04.28

Page 3 of 9

Note:

- (1) Results were obtained by XRF for primary screening, and further chemical testing by ICP (for Cd, Pb, Hg), UV-Vis (for Cr(VI)) and GC-MS (for PBBs, PBDEs) are recommended to be performed, if the concentration exceeds the below warning value according to IEC 62321-3-1:2013.

Element	Unit	Non-metal	Metal	Composite Material
Cd	mg/kg	BL≤70-3σ<X <130+3σ≤OL	BL≤70-3σ<X <130+3σ≤OL	BL≤50-3σ<X <150+3σ≤OL
Pb	mg/kg	BL≤700-3σ<X <1300+3σ≤OL	BL≤700-3σ<X <1300+3σ≤OL	BL≤500-3σ<X <1500+3σ≤OL
Hg	mg/kg	BL≤700-3σ<X <1300+3σ≤OL	BL≤700-3σ<X <1300+3σ≤OL	BL≤500-3σ<X <1500+3σ≤OL
Cr	mg/kg	BL≤700-3σ<X	BL≤700-3σ<X	BL≤500-3σ<X
Br	mg/kg	BL≤300-3σ<X	--	BL≤250-3σ<X

Note:

- BL = Below Limit
 OL = Over Limit
 X = Inconclusive

- (2) The XRF screening test for RoHS elements – The reading may be different to the actual content in the sample be of non-uniformity composition.
- (3) The maximum permissible limit is quoted from the document 2015/863/EC amending RoHS directive 2011/65/EU:
- (4) ▼=For restricted substances PBBs and PBDEs, the results show the total Br content; The restricted substance was Cr(VI), and the results showed the total Cr content

RoHS Restricted Substances	Maximum Concentration Value (mg/kg) (by weight in homogenous materials)
Cadmium (Cd)	100
Lead (Pb)	1000
Mercury (Hg)	1000
Hexavalent Chromium (Cr(VI))	1000
Polybrominated biphenyls (PBBs)	1000
Polybrominated diphenylethers (PBDEs)	1000
Dibutyl Phthalate(DBP)	1000
Benzylbutyl Phthalate(BBP)	1000
Di-(2-ethylhexyl) Phthalate(DEHP)	1000
Diisobutyl phthalate(DIBP)	1000



TEST REPORT

Report No.: LCS210415091AR

Date: 2021.04.28

Page 4 of 9

Disclaimers:

This XRF Screening report is for reference purposes only. The applicant shall make its/his/her own judgment as to whether the information provided in this XRF screening report is sufficient for its/his/her purposes.

The result shown in this XRF screening report will differ based on various factors, including but not limited to, the sample size, thickness, area, surface flatness, equipment parameters and matrix effect (e.g. plastic, rubber, metal, glass, ceramic etc.). Further wet chemical pre-treatment with relevant chemical equipment analysis are required to obtain quantitative data.

B. EU RoHS Directive 2011/65/EU and its amendment Directives 2015/863/EU on Lead, Cadmium, Mercury, Hexavalent Chromium, PBBs, PBDEs, DBP, BBP, DEHP, DIBP content.

Test method:

Lead(Pb) & Cadmium(Cd) Content:

With reference to IEC 62321-5:2013, by acid digestion and analysis was performed by inductively coupled plasma atomic emission spectrometer (ICP-OES)

Mercury(Hg) Content:

With reference to IEC 62321-4:2013+AMD1:2017 CSV, by acid digestion and analysis was performed by inductively coupled plasma atomic emission spectrometer (ICP-OES)

Hexavalent Chromium(Cr(VI)) Content:

With reference to IEC 62321-7-1:2015 or IEC 62321-7-2:2017, by alkaline digestion and analysis was performed by UV-visible spectrophotometer (UV-Vis)

PBBs & PBDEs Content:

With reference to IEC 62321-6:2015, by solvent extraction and analysis was performed by gas chromatographic-mass spectrometer (GC-MS)

BBP DBP DEHP & DIBP Content:

With reference to IEC 62321-8:2017, by solvent extraction and analysis was performed by gas chromatographic-mass spectrometer (GC-MS)

1) The test results of Lead (Pb) and Cadmium (Cd)

Item	Unit	MDL	Results					Limit
			(2)	(4)	(9)	(12)	(13)	
Lead Content (Pb)	mg/kg	5	N.D.	N.D.	N.D.	N.D.	N.D.	1000

2) The test results of Hexavalent Chromium (Cr(VI))(metal)

Item	Unit	MDL	Results	Limit
			(12)	
Hexavalent Chromium(Cr(VI)) ▼	ug/cm ²	0.10	N.D	-



TEST REPORT

Report No.: LCS210415091AR

Date: 2021.04.28

Page 5 of 9

Note:

- MDL = Method Detection Limit
- /= Not apply
- LOQ = Limit of Quantification, The LOQ of Hexavalent chromium is 0.10 $\mu\text{g}/\text{cm}^2$
- ▼ = a. The sample is positive for Cr(VI) if the Cr(VI) concentration is greater than 0.13 $\mu\text{g}/\text{cm}^2$. The sample coating is considered to contain Cr(VI)
 b. The sample is negative for Cr(VI) if Cr(VI) is N.D.(concentration less than 0.10 $\mu\text{g}/\text{cm}^2$). The sample coating is considered a non- Cr(VI) based coating
 c. The result between 0.10 $\mu\text{g}/\text{cm}^2$ and 0.13 $\mu\text{g}/\text{cm}^2$ is considered to be inconclusive, unavoidable coating variations may influence the determination
- Information on storage conditions and production date of the tested samples is unavailable and thus Cr(VI) results represent status of the sample at the time of testing
- mg/kg = ppm=parts per million
- N.D.=Not Detected(<MDL or LOQ)

- #1 According to RoHS directive 2011/65/EU and its amendments, Lead is exempted in glass of cathode ray tubes, electronic components and fluorescent tubes.
- #2 According to RoHS directive 2011/65/EU and its amendments, Lead is exempted in electronic ceramic parts (e.g. piezoelectronic devices).
- #3 According to RoHS directive 2011/65/EU and its amendments, Lead is exempted as an alloying element in Copper containing up to 4% (40000ppm) by weight.
- #4 According to RoHS directive 2011/65/EU and its amendments, Lead is exempted in high melting temperature type solders (i.e. lead-based alloys containing 85 % by weight or more lead).
- #5 According to the statement provided by the customer, according to RoHS directive 2011/65/EU and its amendments, Lead is exempted as an alloying element in Aluminum containing up to 0.4% (4000ppm) by weight.
- #6 According to the statement provided by the customer, according to RoHS directive 2011/65/EU and its amendments, Cadmium and its compounds in electrical contact is exempted.
- #7 According to the statement provided by the customer, according to RoHS directive 2011/65/EU and its Amendments, Lead is exempted in steel for machining purposes and in galvanised steel containing up to 0.35% (3500ppm) by weight.



TEST REPORT

Report No.: LCS210415091AR

Date: 2021.04.28

Page 6 of 9

2) The test results of DBP、BBP、DEHP & DIBP

Item	Unit	MDL	Results		Limit
			1	15	
DibuyI Phthalate(DBP)	mg/kg	100	N.D.	N.D.	1000
Benzylbutyl Phthalate(BBP)	mg/kg	100	N.D.	N.D.	1000
Di-(2-ethylhexyl) Phthalate(DEHP)	mg/kg	100	N.D.	N.D.	1000
Diispbutyl phthalate(DIBP)	mg/kg	100	N.D.	N.D.	1000

Item	Unit	MDL	Results	Limit
			3+6+7+8+10+11	
DibuyI Phthalate(DBP)	mg/kg	600	N.D.	1000
Benzylbutyl Phthalate(BBP)	mg/kg	600	N.D.	1000
Di-(2-ethylhexyl) Phthalate(DEHP)	mg/kg	600	N.D.	1000
Diispbutyl phthalate(DIBP)	mg/kg	600	N.D.	1000

Item	Unit	MDL	Results	Limit
			16+17	
DibuyI Phthalate(DBP)	mg/kg	600	N.D.	1000
Benzylbutyl Phthalate(BBP)	mg/kg	600	N.D.	1000
Di-(2-ethylhexyl) Phthalate(DEHP)	mg/kg	600	N.D.	1000
Diispbutyl phthalate(DIBP)	mg/kg	600	N.D.	1000

Remark:

- mg/kg = ppm
- N.D. = Not detected
- MDL=Method detected limited
- Flow chart appendix is included
- Photo appendix is included.



TEST REPORT

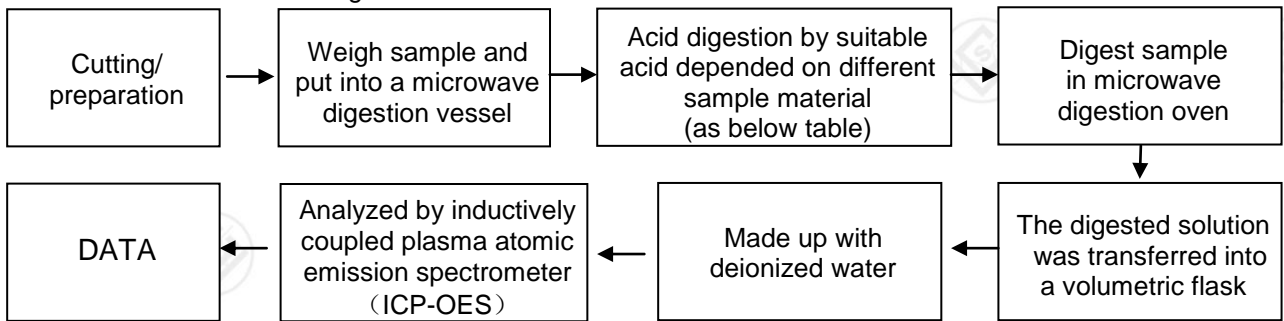
Report No.: LCS210415091AR

Date: 2021.04.28

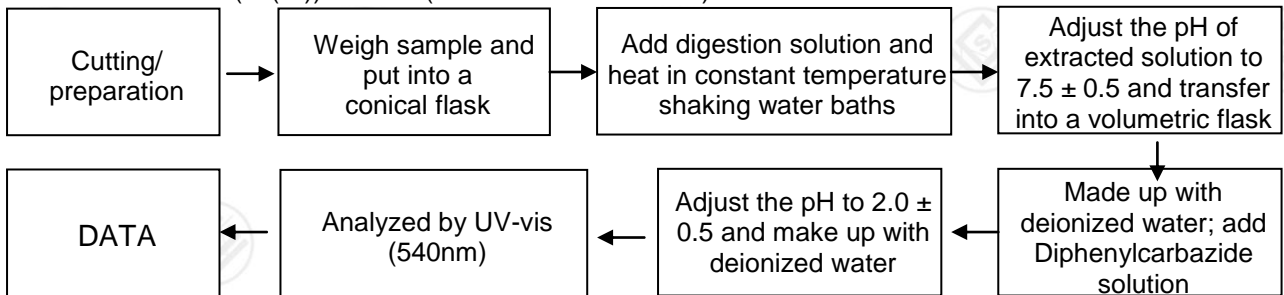
Page 7 of 9

Appendix

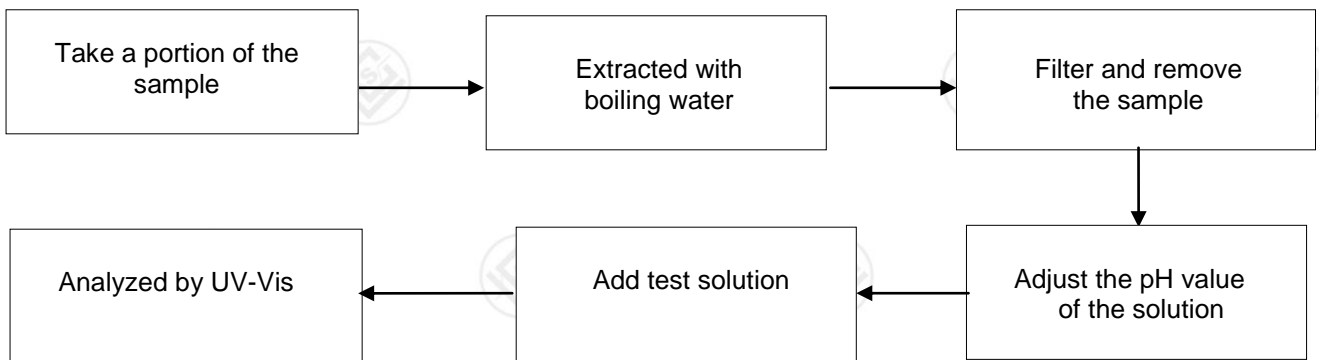
1. Test Flow chart for Cd/Pb /Hg content



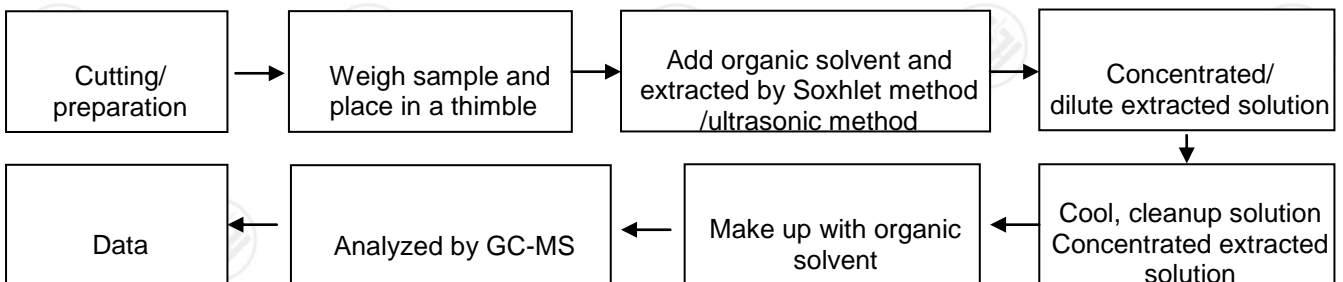
2. Test Flowchart for (Cr(VI)) content (For non-metal material)



Test Flowchart for (Cr(VI)) content (For metal material)



3. Test Flow chart for PBBs & PBDEs & DBP & BBP & DEHP & DIBP content





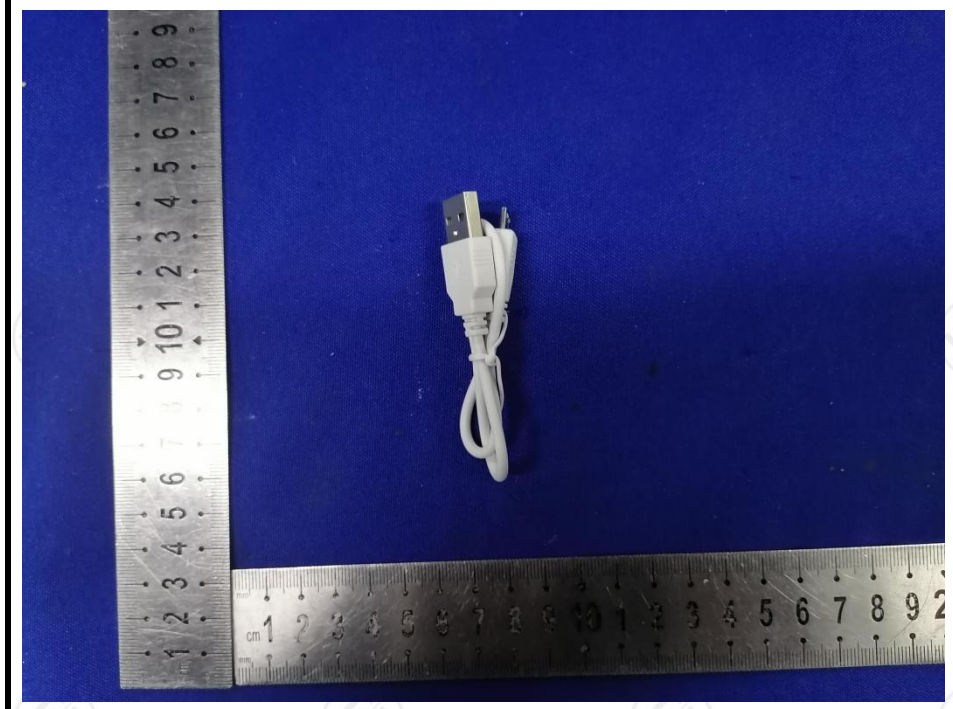
TEST REPORT

Report No.: LCS210415091AR

Date: 2021.04.28

Page 8 of 9

The photo of the sample



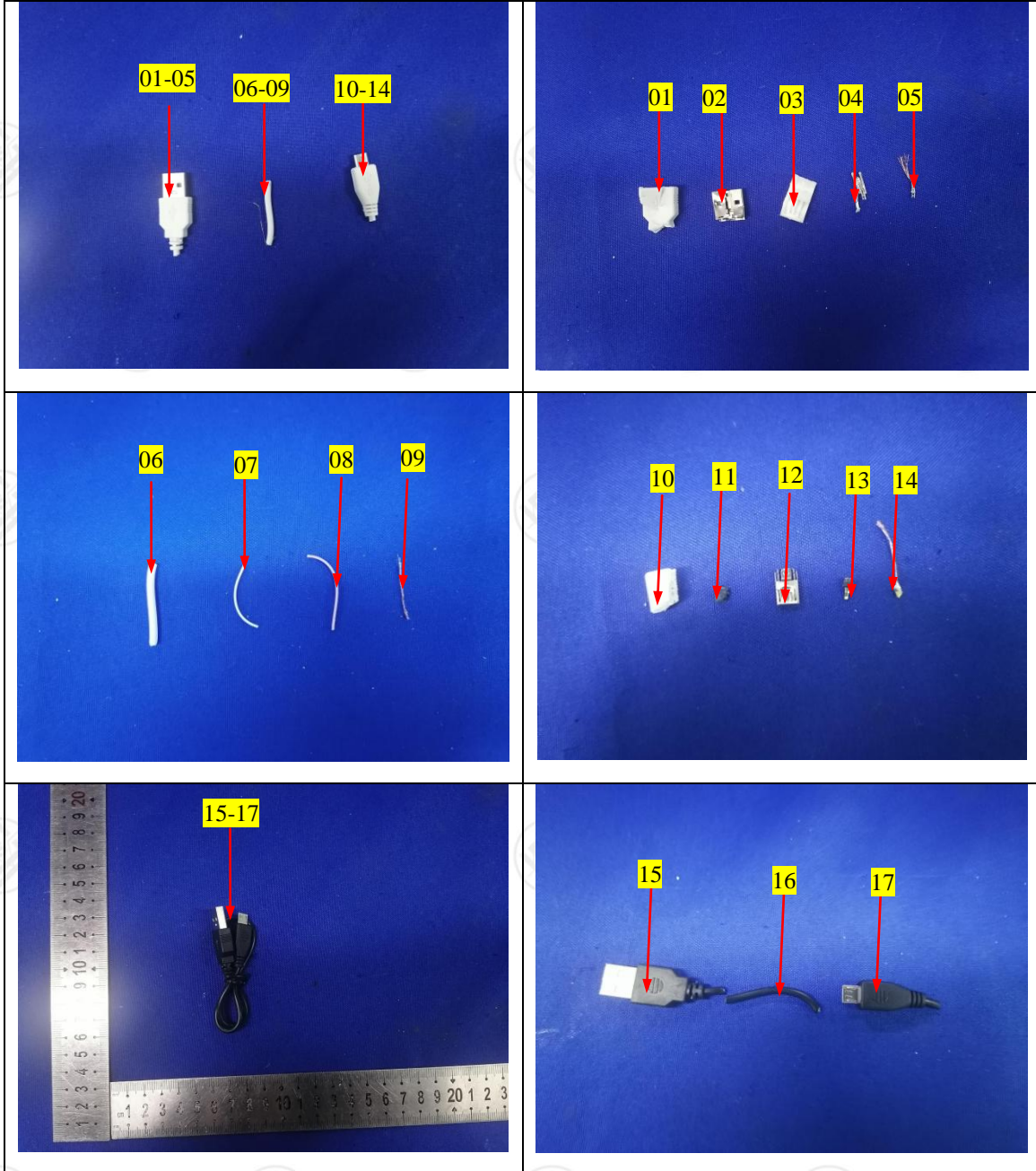


TEST REPORT

Report No.: LCS210415091AR

Date: 2021.04.28

Page 9 of 9



***** End of Report *****

Statement:

1. The test report is considered invalidated without approval signature, special seal on the perforation.
2. The result(s) shown in this report refer only to the sample(s) tested.
3. Without written approval of LCS, this report can't be reproduced except in full.
4. The sample(s) and sample information was/were provided by the client who should be responsible for the authenticity which LCS hasn't verified.
5. In case of any discrepancy between the English version and Chinese version of the testing reports(if generated), the Chinese version shall prevail.